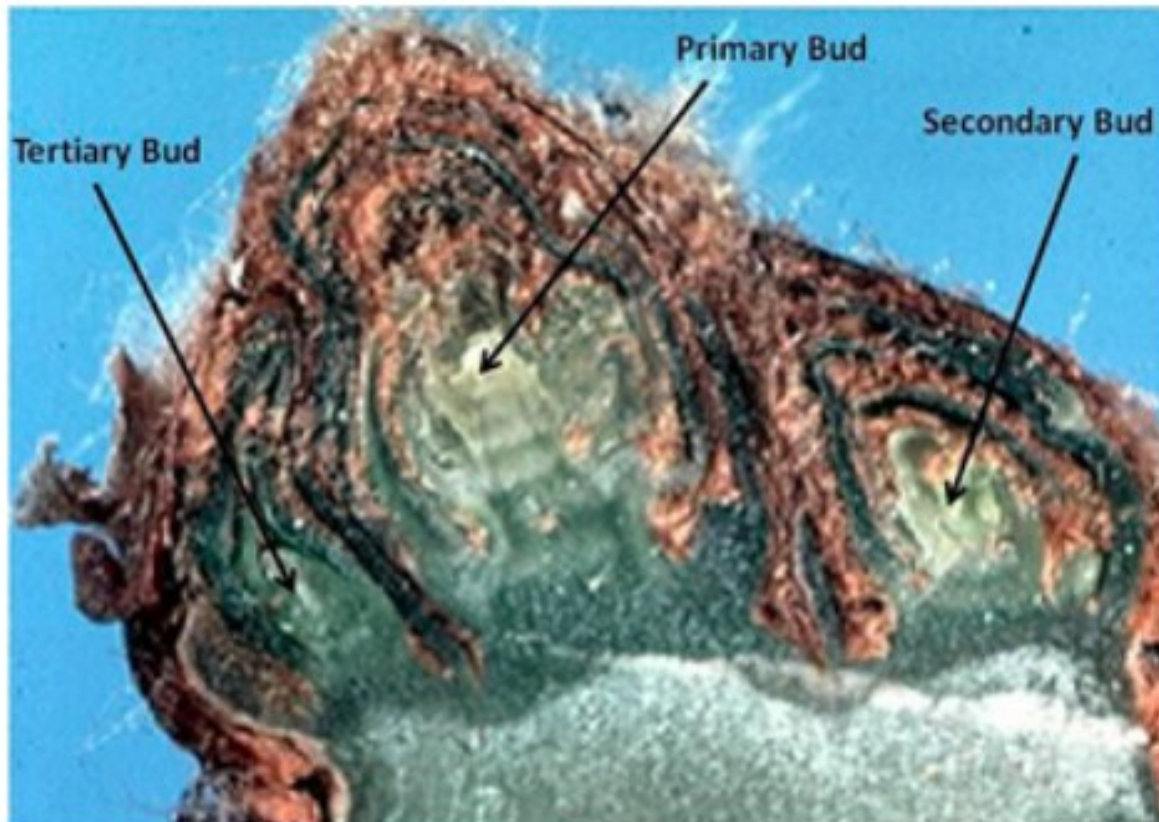
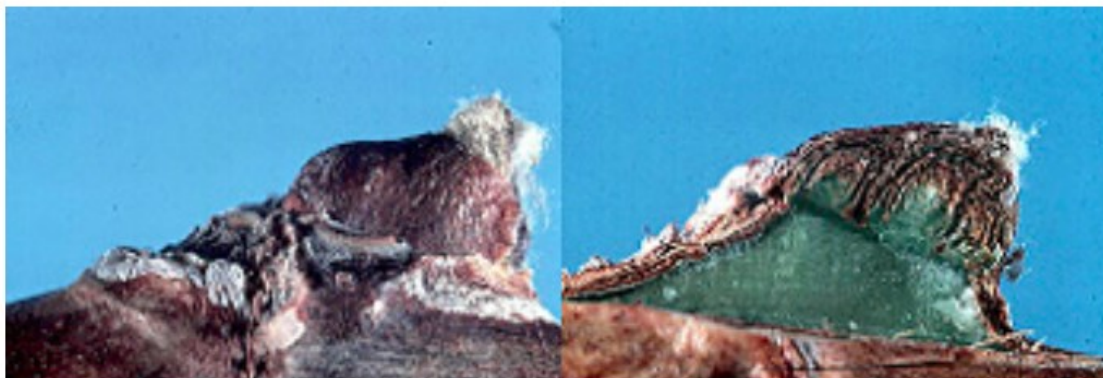


Let's talk this through

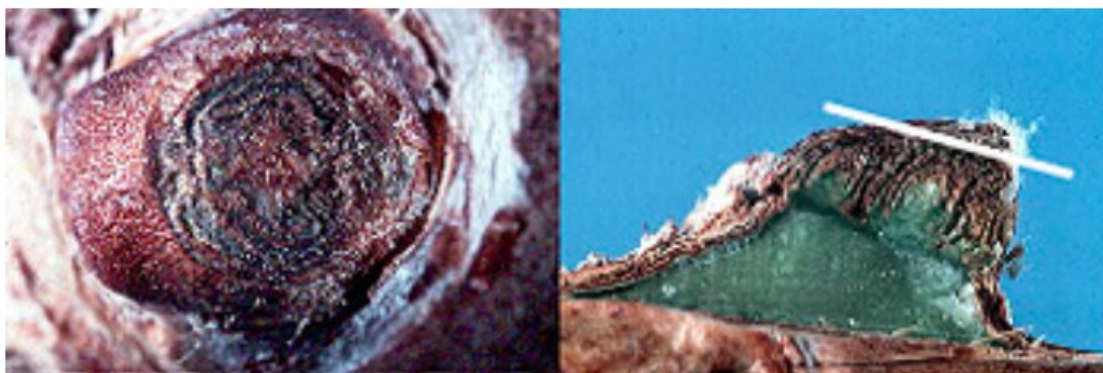
What time of the season do harvest decisions start?



## Dormant Pruning: Assess damaged buds

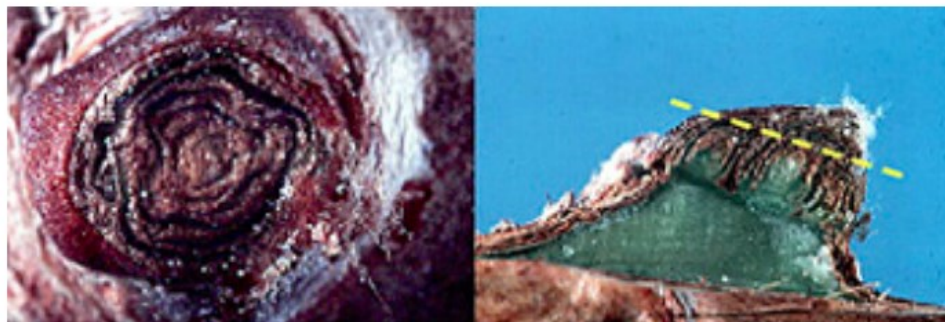


Intact bud



First cut

## Pruning: Assess damaged buds



Second cut

Buds are defined



Third cut

Primary bud!

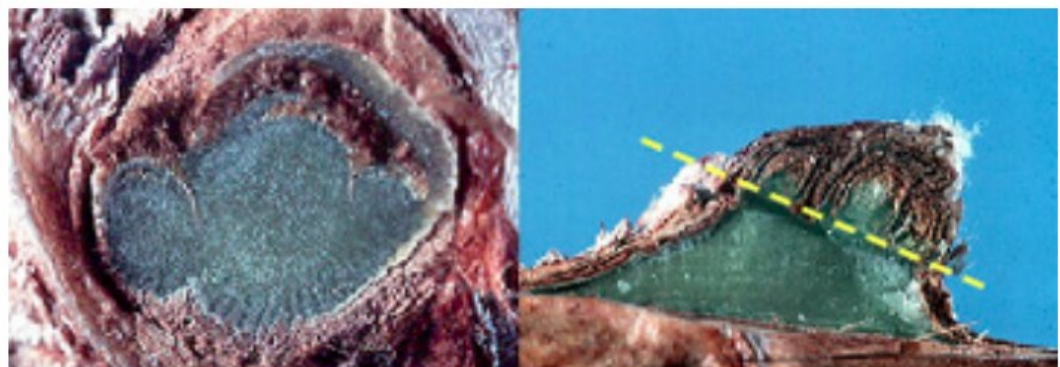


## Dormant Pruning: Assess damaged buds



Fourth cut

Secondary and  
tertiary bud



Fifth cut

Too deep if done  
alone

What's up with this one?



# Recommendations

% dead primary buds	What to do
0-15%	Just prune normally
15-80%	Increase number of buds retained in those areas which show a lot damage
More than 80%	Minimal pruning. Come back later and regulate vegetative growth.

# Take Home Message

**Dormant-Pruning is the first harvest decision of the season**

- Retain undamaged primary buds
- Retain healthy wood
- Don't leave dead wood in the vineyard!