



United States Department of Agriculture  
National Agricultural Statistics Service  
**Georgia Crop Progress  
and Condition Report**



Cooperating with the Georgia Department of Agriculture and the Cooperative Extension Service  
Southern Regional Field Office · 355 East Hancock Avenue, Suite 100 · Athens, GA 30601 · (706) 713-5400  
[www.nass.usda.gov](http://www.nass.usda.gov)

This report contains data collected each week from respondents across the state whose occupations provide them opportunities to discuss agricultural production with farmers in their counties as well as to make visual observations. We thank all who have contributed to this report.

May 23, 2022

Media Contact: Anthony Prillaman

**General**

According to the National Agricultural Statistics Service in Georgia, there were 6.4 days suitable for fieldwork for the week ending Sunday, May 22, 2022. Precipitation for the state ranged from no rain to 2.1 inches. Average high temperatures ranged from the low 80s to the low 90s. Average low temperatures ranged from the mid 50s to the low 70s.

**Crops**

Dry conditions persisted across the state for most of the week. Some areas received much needed rain over the weekend. According to the U.S. Drought Monitor, most of the state was experiencing abnormally dry conditions while southeast Georgia and parts of central Georgia saw moderate to severe drought. Growers in southeast Georgia reported that they stopped planting row crops due to the lack of soil moisture, and that dryland crops were suffering from heat and lack of rain.

Corn fields began to tassel, and some were silking. Irrigated corn fields continued to be in good condition, but dryland corn was noted to be stressed and in need of rain. Cotton, peanut, and soybean planting continued, and soil moisture was a severely limiting factor in some areas. Pivots were being used to irrigate cotton fields to get a good stand. Early peanut stands were reported to be good as planting proceeded. Hay cutting continued to progress with dry conditions allowing fields to be cut and baled. Wheat harvest continued as fields finished drying down. Peach harvest began in many areas but is not expected to ramp up until early June.

**Livestock and Pastures**

Livestock were generally in good condition throughout the state. Pasture conditions continued declining with the lack of rain, high temperatures and low humidity.

**Crop Progress for Week Ending 05/22/22**

Crop stage	Prev year (percent)	Prev week (percent)	This week (percent)	5 Year avg (percent)
Blueberries – Harvested....	59	56	76	66
Corn – Silking.....	4	NA	4	8
Cotton – Planted.....	58	39	59	60
Hay – First Cutting.....	72	55	70	73
Oats – Harvested.....	36	13	32	33
Onions – Harvested.....	94	94	98	94
Peaches – Harvested.....	12	2	8	13
Peanuts – Planted.....	63	48	71	68
Soybeans – Planted.....	48	31	41	41
Soybeans – Emerged.....	28	10	25	23
Winter wheat – Harvested..	29	15	29	30

(NA) Not available

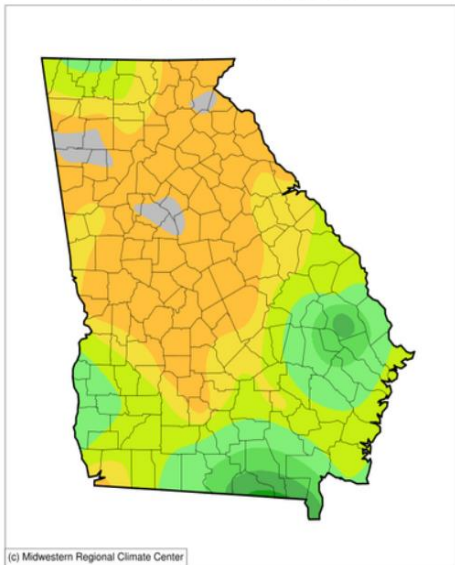
**Conditions for Week Ending 05/22/22**

Crop	Very poor (percent)	Poor (percent)	Fair (percent)	Good (percent)	Excellent (percent)
Cattle.....	1	5	23	62	9
Corn.....	1	7	30	56	6
Oats.....	1	6	38	53	2
Pasture and range....	3	15	39	38	5
Peaches.....	0	0	6	59	35
Tobacco.....	0	0	51	45	4
Winter wheat.....	1	3	37	55	4

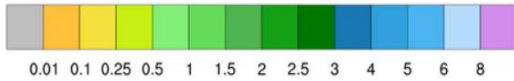
**Soil Moisture for Week Ending 05/22/22**

Topsoil	Previous week (percent)	This week (percent)
Very short.....	18	20
Short.....	44	45
Adequate.....	36	33
Surplus.....	2	2
Subsoil	Previous week (percent)	This week (percent)
Very short.....	13	13
Short.....	43	45
Adequate.....	43	40
Surplus.....	1	2

**Accumulated Precipitation (in)**  
May 16, 2022 to May 22, 2022



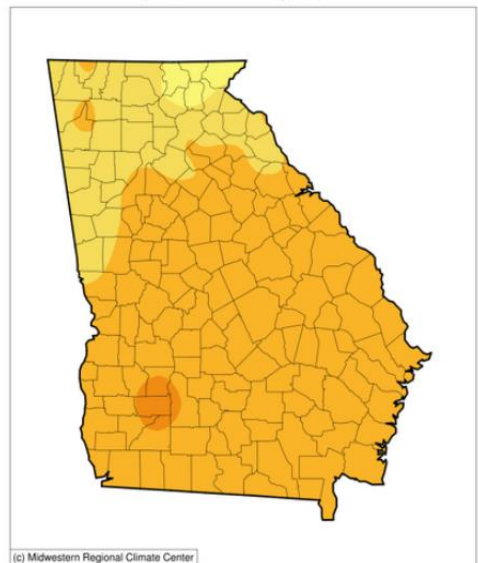
(c) Midwestern Regional Climate Center



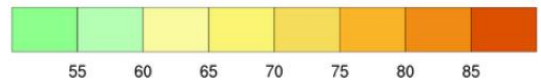
0.01 0.1 0.25 0.5 1 1.5 2 2.5 3 4 5 6 8

<http://mrcc.purdue.edu/CLIMATE/>

**Average Temperature (°F)**  
May 16, 2022 to May 22, 2022



(c) Midwestern Regional Climate Center

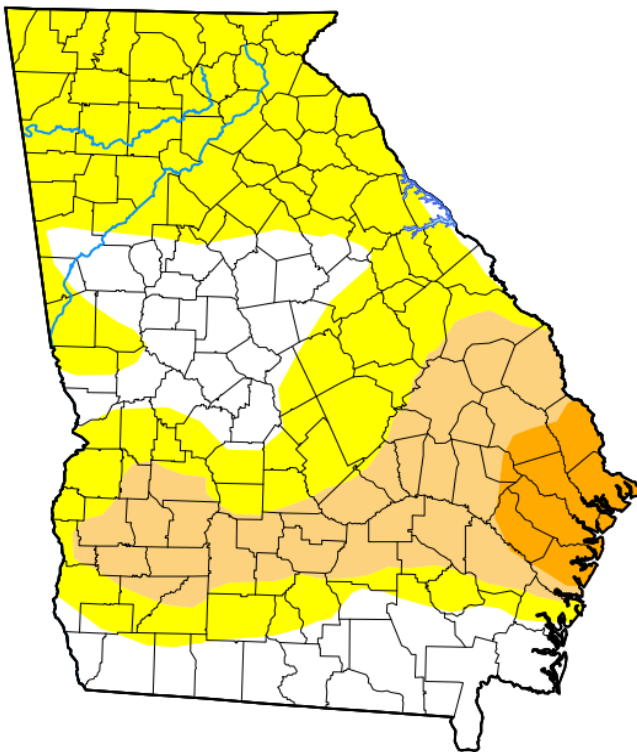


55 60 65 70 75 80 85

<http://mrcc.purdue.edu/CLIMATE/>

## U.S. Drought Monitor Georgia

**May 17, 2022**  
(Released Thursday, May 19, 2022)  
Valid 8 a.m. EDT



*Drought Conditions (Percent Area)*

	None	D0-D4	D1-D4	D2-D4	D3-D4	D4
<b>Current</b>	26.74	73.26	24.80	4.99	0.00	0.00
<b>Last Week</b> 05-10-2022	58.09	41.91	24.80	1.52	0.00	0.00
<b>3 Months Ago</b> 02-15-2022	80.37	19.63	1.66	0.00	0.00	0.00
<b>Start of Calendar Year</b> 01-04-2022	97.01	2.99	0.00	0.00	0.00	0.00
<b>Start of Water Year</b> 09-28-2021	100.00	0.00	0.00	0.00	0.00	0.00
<b>One Year Ago</b> 05-18-2021	100.00	0.00	0.00	0.00	0.00	0.00

**Intensity:**

- None
- D0 Abnormally Dry
- D1 Moderate Drought
- D2 Severe Drought
- D3 Extreme Drought
- D4 Exceptional Drought

The Drought Monitor focuses on broad-scale conditions. Local conditions may vary. For more information on the Drought Monitor, go to <https://droughtmonitor.unl.edu/About.aspx>

**Author:**

Richard Heim  
NCEI/NOAA



[droughtmonitor.unl.edu](http://droughtmonitor.unl.edu)