



United States Department of Agriculture
National Agricultural Statistics Service
**Georgia Crop Progress
and Condition Report**



Cooperating with the Georgia Department of Agriculture and the Cooperative Extension Service
Southern Regional Field Office · 355 East Hancock Avenue, Suite 100 · Athens, GA 30601 · (706) 713-5400
www.nass.usda.gov

This report contains data collected each week from respondents across the state whose occupations provide them opportunities to discuss agricultural production with farmers in their counties as well as to make visual observations. We thank all who have contributed to this report.

May 16, 2022

Media Contact: Anthony Prillaman

General

According to the National Agricultural Statistics Service in Georgia, there were 6.4 days suitable for fieldwork for the week ending Sunday, May 15, 2022. Precipitation for the state ranged from no rain to 2.2 inches. Average high temperatures ranged from the mid 70s to the high 80s. Average low temperatures ranged from the low 50s to the low 60s.

Crops

Scattered showers across parts of the state last week helped some counties although many areas are still in need of rain. Soil moisture levels were reported as short or very short throughout much of the state. Most of southeast Georgia and parts of central Georgia continued to see abnormally dry and moderate drought conditions. Corn was nearly completely emerged as irrigation continued to be used where available. Nematodes were reported in central Georgia corn, likely due to mild winter conditions. Cotton, peanut, and soybean planting continued, although soil moisture was a limiting factor in many areas. Some cotton fields were experiencing thin stands due to lack of soil moisture. Hay cutting continued to progress, although farmers were concerned about regrowth due to the lack of rain over the past month. Wheat harvest is expected to pick up this week as fields have dried down. Onion harvesting neared completion, well ahead of historic progress. Peach harvest began, but is not anticipated to ramp up until the first of June to mid-June.

Livestock and Pastures

Livestock were generally in good condition throughout the state. Pasture conditions continued declining with the lack of rain. Fields were stressed and showing signs of slow growth.

Crop Progress for Week Ending 05/15/22

Crop stage	Prev year (percent)	Prev week (percent)	This week (percent)	5 Year avg (percent)
Blueberries - Harvested.....	49	43	56	57
Corn – Emerged.....	93	90	96	95
Cotton – Planted.....	35	22	39	42
Hay – First Cutting.....	59	40	55	61
Oats – Harvested.....	21	6	13	18
Onions – Harvested.....	82	90	94	83
Peaches – Harvested.....	8	0	2	7
Peanuts – Planted.....	39	28	48	49
Soybeans – Planted.....	30	18	31	27
Soybeans – Emerged.....	15	0	10	11
Winter wheat – Harvested..	14	7	15	17

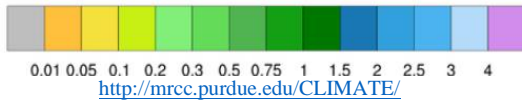
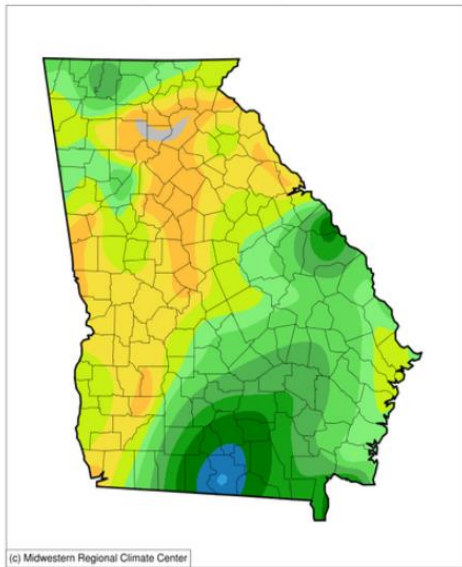
Conditions for Week Ending 05/15/22

Crop	Very poor (percent)	Poor (percent)	Fair (percent)	Good (percent)	Excellent (percent)
Blueberries	34	33	22	11	0
Cattle	1	5	21	63	10
Corn	0	5	27	61	7
Oats.....	0	7	38	52	3
Pasture and range	3	10	34	44	9
Peaches	0	0	15	55	30
Tobacco.....	0	0	49	43	8
Winter wheat.....	1	4	42	47	6

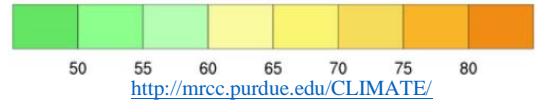
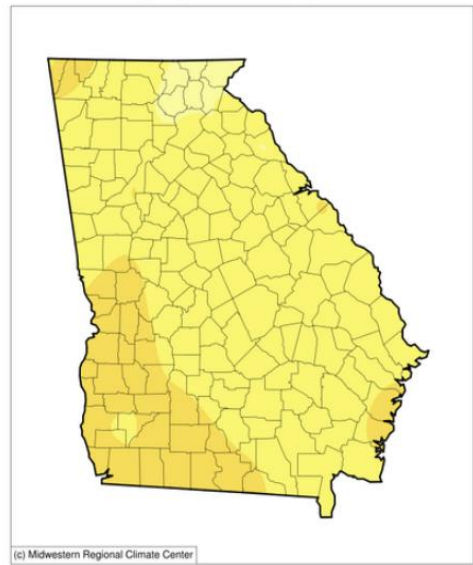
Soil Moisture for Week Ending 05/15/22

Topsoil	Previous week (percent)	This week (percent)
Very short.....	10	18
Short.....	37	44
Adequate.....	51	36
Surplus.....	2	2
Subsoil	Previous week (percent)	This week (percent)
Very short.....	8	13
Short.....	32	43
Adequate.....	58	43
Surplus.....	2	1

Accumulated Precipitation (in)
May 09, 2022 to May 15, 2022

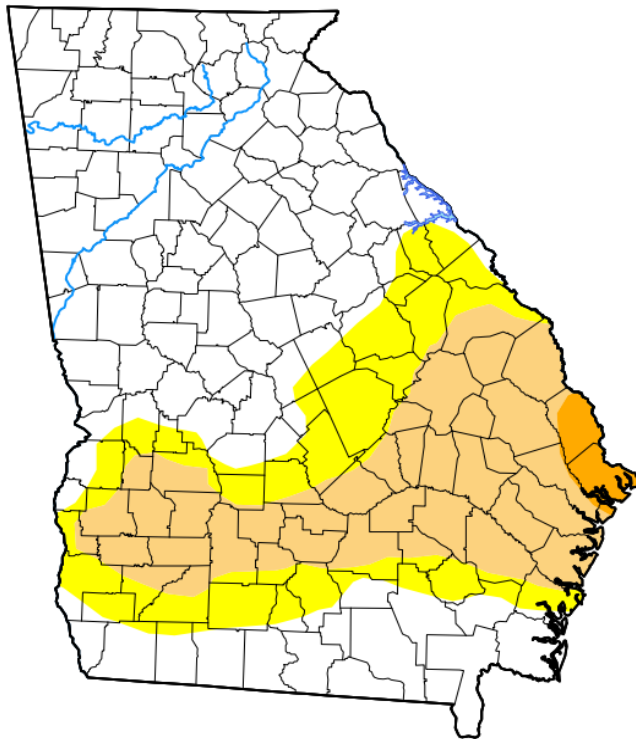


Average Temperature (°F)
May 09, 2022 to May 15, 2022



U.S. Drought Monitor Georgia

May 10, 2022
(Released Thursday, May 12, 2022)
Valid 8 a.m. EDT



Drought Conditions (Percent Area)

	None	D0-D4	D1-D4	D2-D4	D3-D4	D4
Current	58.09	41.91	24.80	1.52	0.00	0.00
Last Week 05-03-2022	51.00	49.00	22.55	0.00	0.00	0.00
3 Months Ago 02-08-2022	81.13	18.87	0.00	0.00	0.00	0.00
Start of Calendar Year 01-04-2022	97.01	2.99	0.00	0.00	0.00	0.00
Start of Water Year 09-28-2021	100.00	0.00	0.00	0.00	0.00	0.00
One Year Ago 05-11-2021	100.00	0.00	0.00	0.00	0.00	0.00

Intensity:

- None
- D0 Abnormally Dry
- D1 Moderate Drought
- D2 Severe Drought
- D3 Extreme Drought
- D4 Exceptional Drought

The Drought Monitor focuses on broad-scale conditions. Local conditions may vary. For more information on the Drought Monitor, go to <https://droughtmonitor.unl.edu/About.aspx>

Author:

David Simeral
Western Regional Climate Center



droughtmonitor.unl.edu