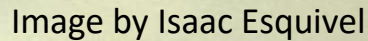


Cotton Jassid Agent Update

Phillip Roberts

September 1, 2025

As of August 29, 2025

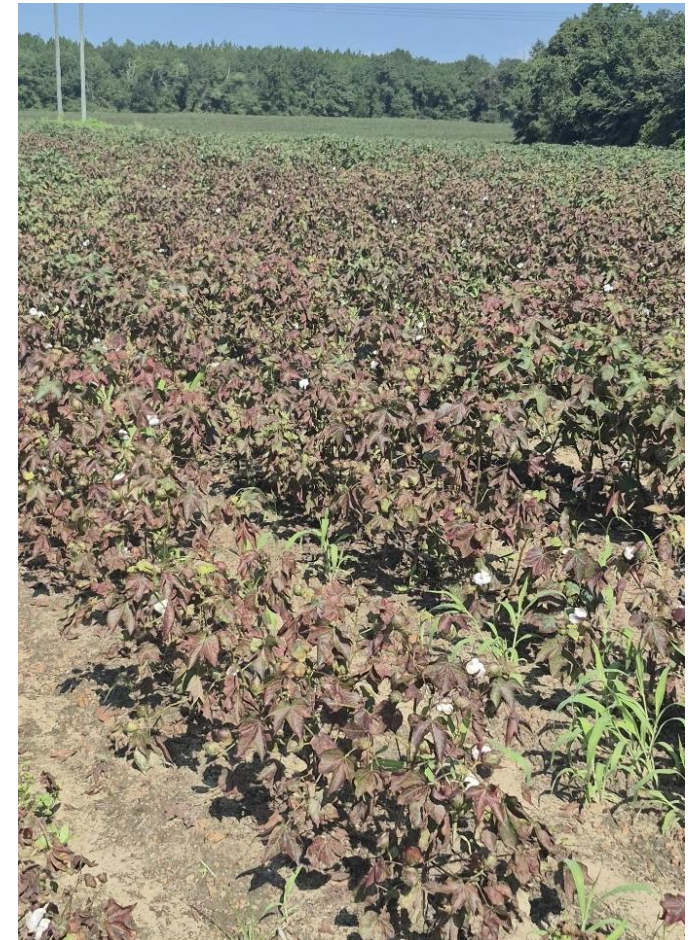


DO NOT underestimate this pest!

Cotton Jassid Plant Damage



Early symptoms of “hopperburn” left.
Severe symptoms middle and right.



Treatable infestations continue to spread, **BE SURE YOU ARE MONITORING THIS SITUATION CLOSELY IN YOUR COUNTY!**

Jassid infestations and plant injury symptoms are higher on field margins. Symptoms can show up quickly, we have observed fields to crash in 2 weeks.

Symptoms will continue to develop when jassids are killed. This is likely due to the toxins injected into the plant when jassids feed.

Scouting Cotton Jassid



- Count jassid nymphs on the 3rd, 4th, or 5th mainstem leaf below the terminal (they are most commonly found on the 4th).
- **NEW Preliminary Threshold:**
 - 1-2 nymphs per leaf.
 - Or early symptoms (slight hopperburn) commonly observed in inner portion of field and jassids present.
 - Zoom in pic on right and you will see cast skins (exoskeleton where nymphs molted).



Insecticide Selection

- Bidrin has been a consistent performer on commercial fields and in small plots.
- Argyle and Assail have not be as consistent as Bidrin but are good options when whiteflies are present.
- Carbine continues to look good in small plot trials and one 12 acre block sprayed in Tifton.
- Centric, Transform, Sefina, and Sivanto are options, we are continuing to learn as much as we can.
- Bifenthrin (I would expect pyrethroids in general) do not provide acceptable control.

Cotton Jassid Observations

- As of today, the highest jassid populations and injury symptoms have occurred on earlier planted cotton.
- I expect this to change in the coming days and weeks. As we begin defoliating cotton it is likely jassids will move to green lush cotton.
- This jassid situation is likely going to keep getting worse, maybe really bad on late cotton (I hope and pray I am wrong).

Cotton Jassid Common Questions

- How long before we will need to retreat a field?
 - This is dependent on insecticide used and how much migration or reinfestation is occurring. Scout! Some fields have required a second application.
- How long do we need to protect cotton from jassids?
 - We need green leaves to fill top bolls.
 - Based on observations that jassids can crash a field in 2 weeks our thoughts are:
 - Protect cotton up to 14 days before the earliest you could defoliate a field (60% open) and the field is still green.
 - This generally corresponds to about 20-25 percent open boll and the field is still green.
 - If the field is yellowing and beginning to show symptoms I would still spray even at 20-25 percent open.
- If the field is crashing, leaves are yellow and beginning to turn red and brown, it is likely over and treatment may not be of a benefit.

Cotton Jassid

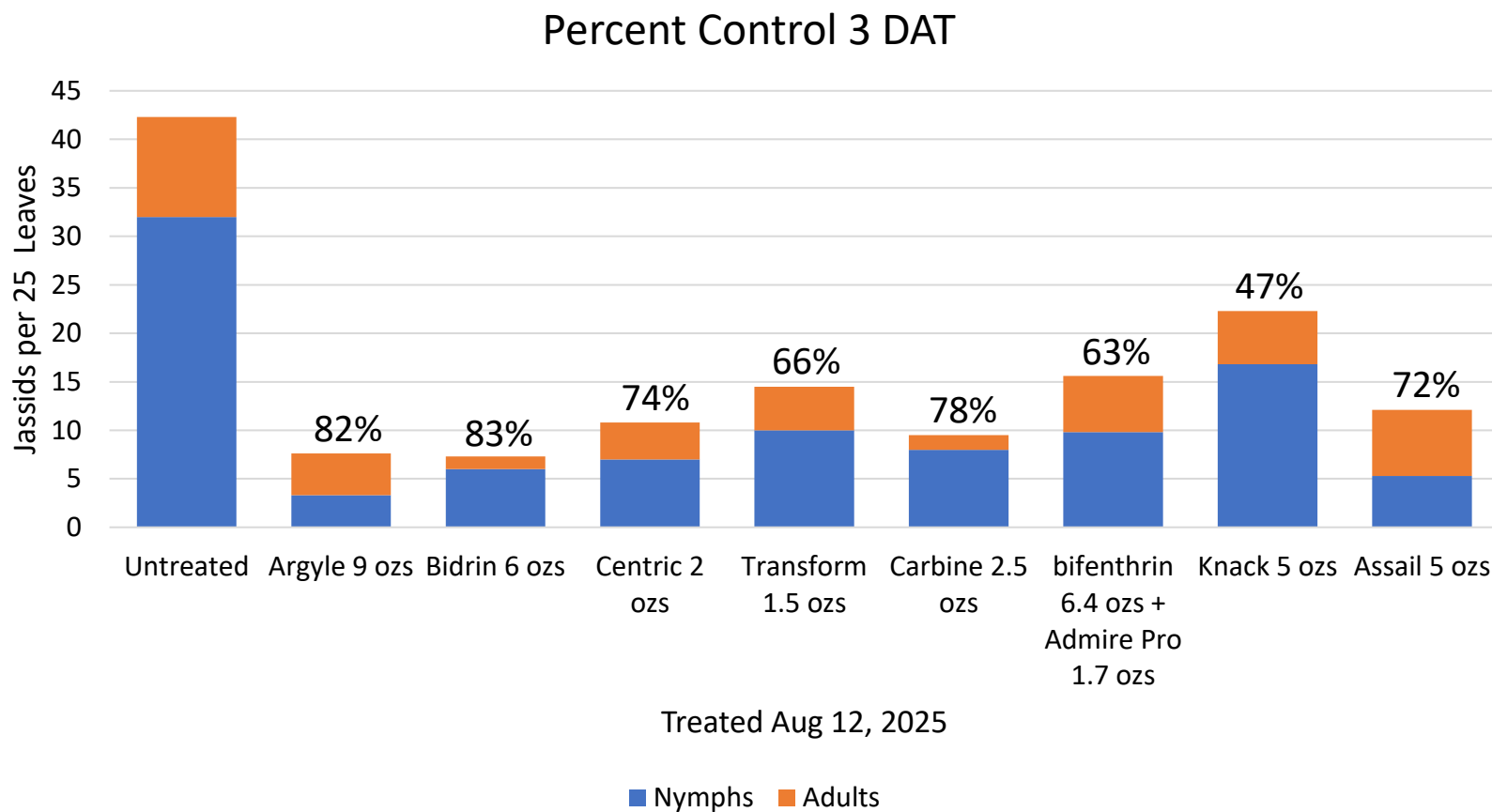
- This is an EVOLVING situation.
- We will provide updates as new information becomes available (we will try to be concise).
- Please let me know if you make interesting observations.

Insecticide Options

- The following slides are more counts from jassid insecticide efficacy trials.
- We have 14 day after treatment counts for some trials and have initiated a few more.
- Thank you to all the county agents and cooperating growers who have assisted with trials and to Mrs. Sarah Hobby and the Cotton Entomology crew who have put in many hours with jassid evaluations.

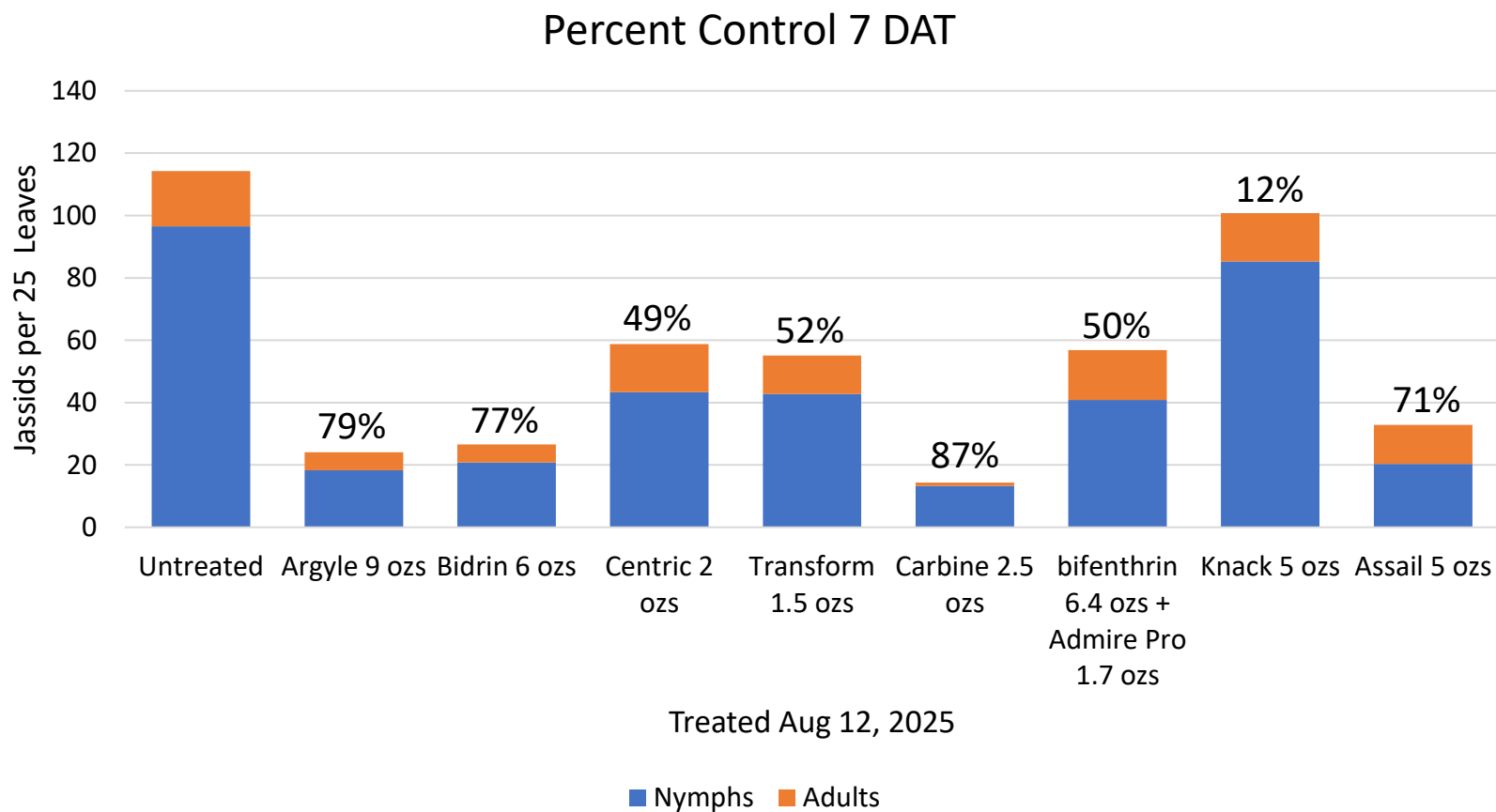
Cotton Jassid

Appling County (3 DAT)



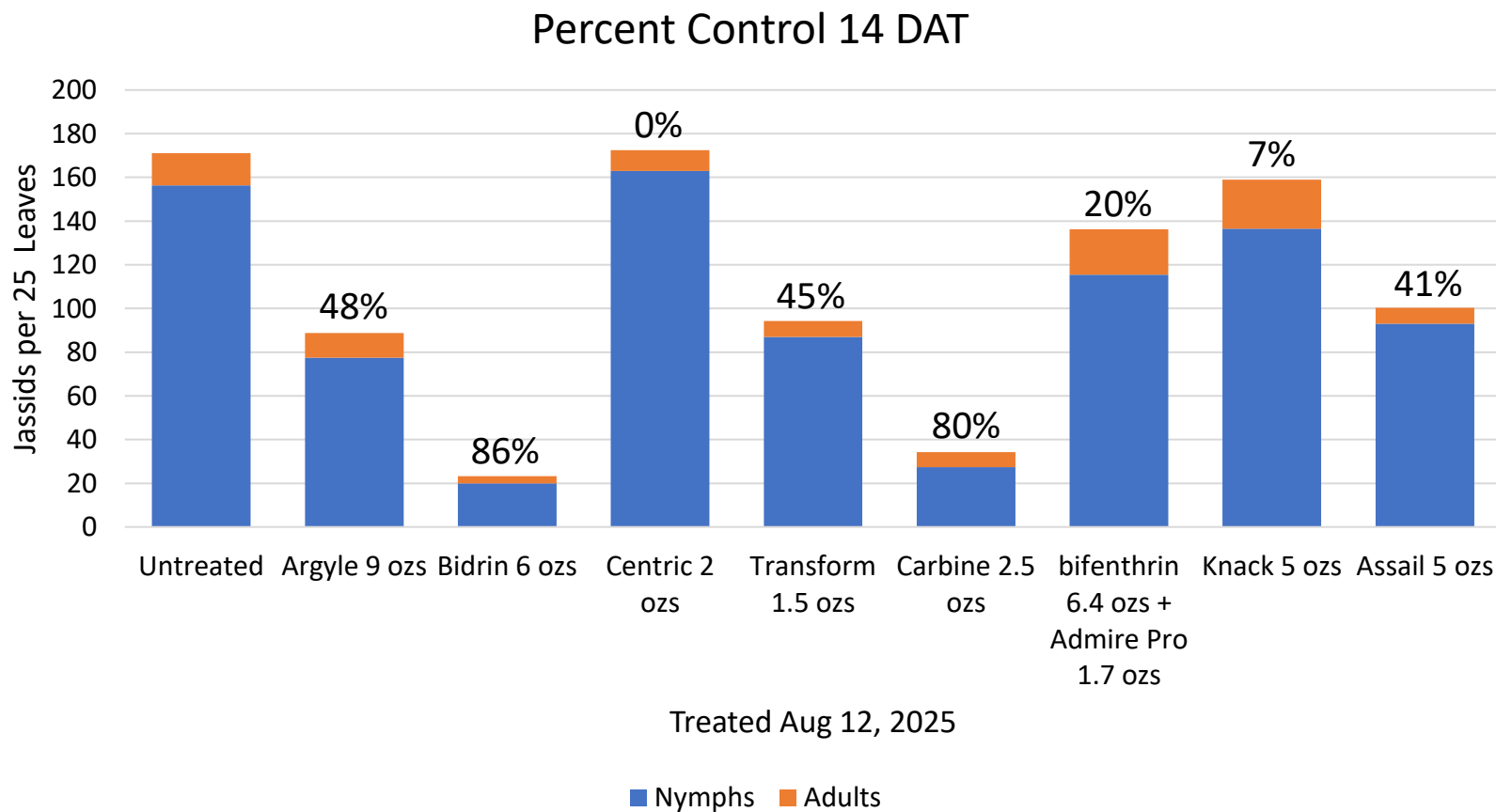
Cotton Jassid

Appling County (7 DAT)



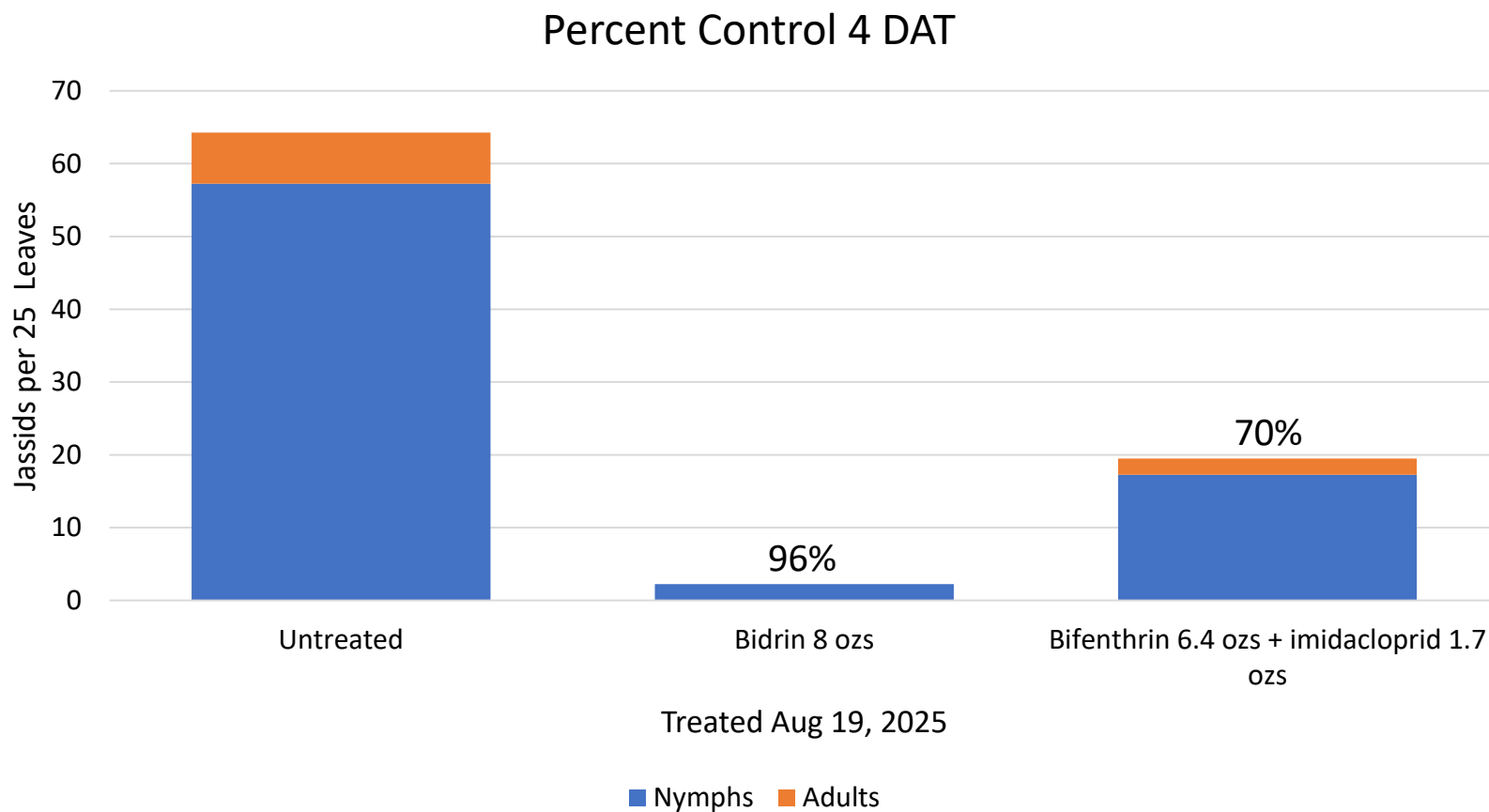
Cotton Jassid

Appling County (14 DAT)



Cotton Jassid

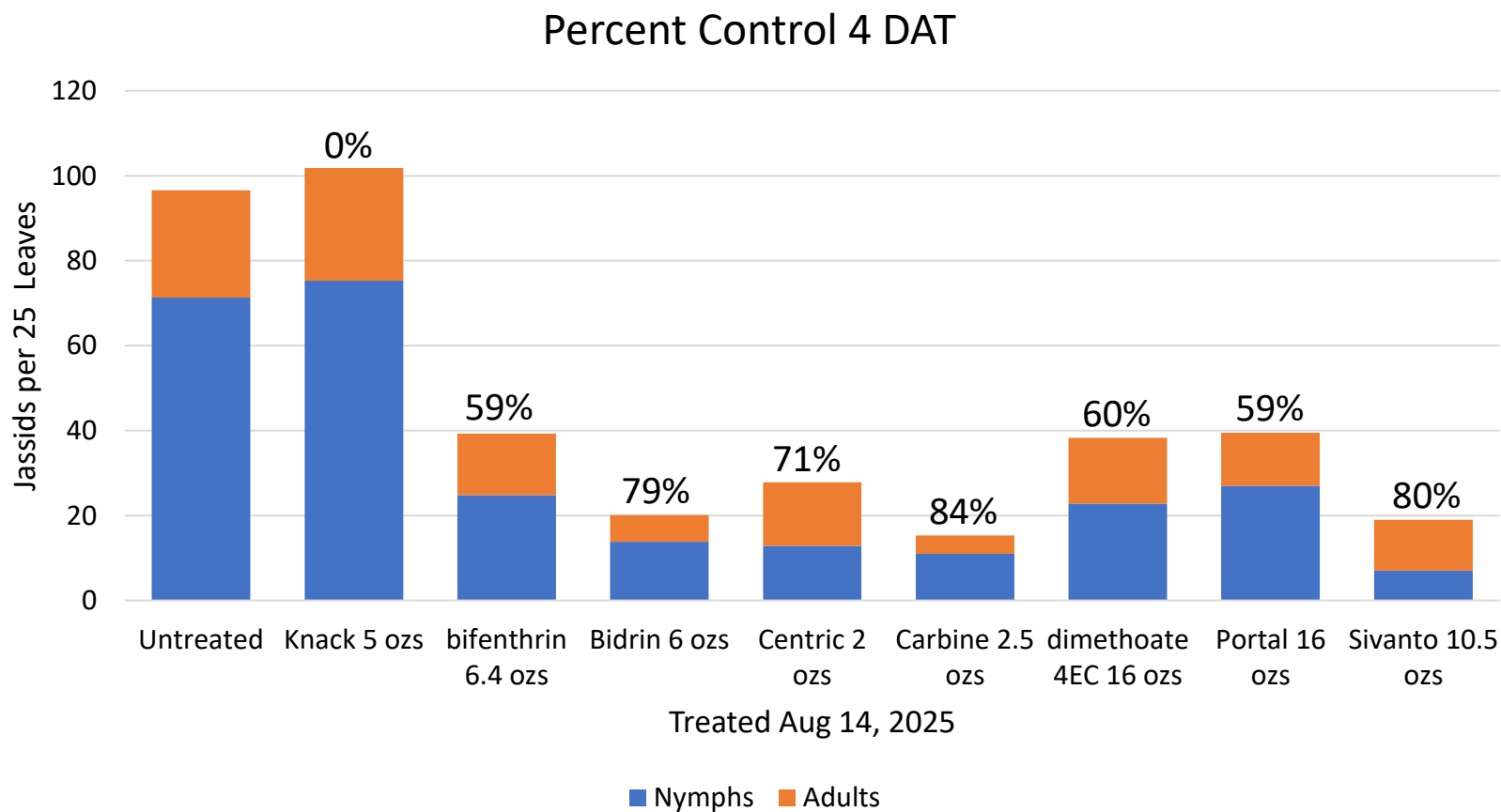
Appling County Strip Trial (7 DAT)



Plots 6 rows wide and >300 feet in length.

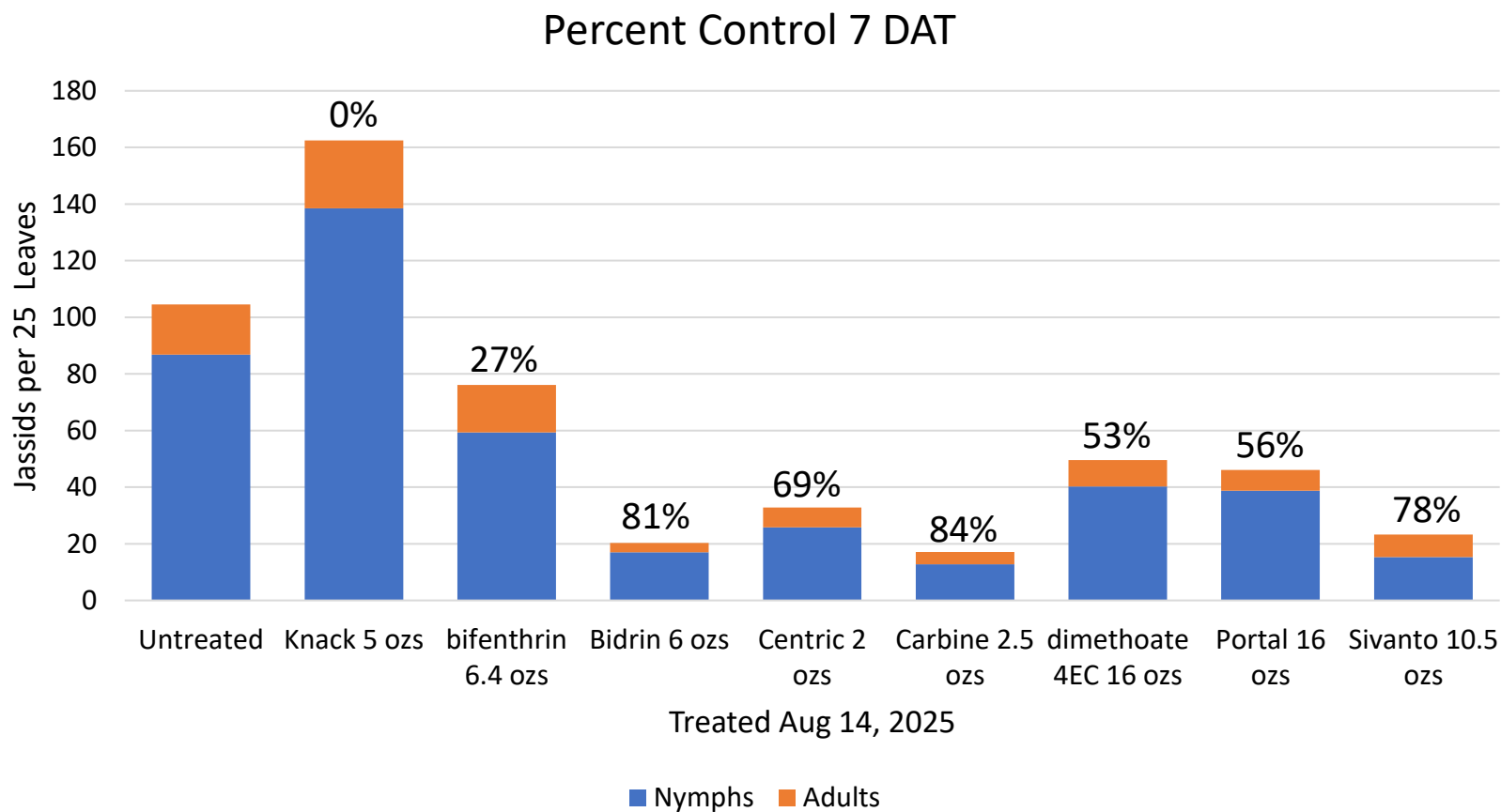
Cotton Jassid

Brooks County (4 DAT)



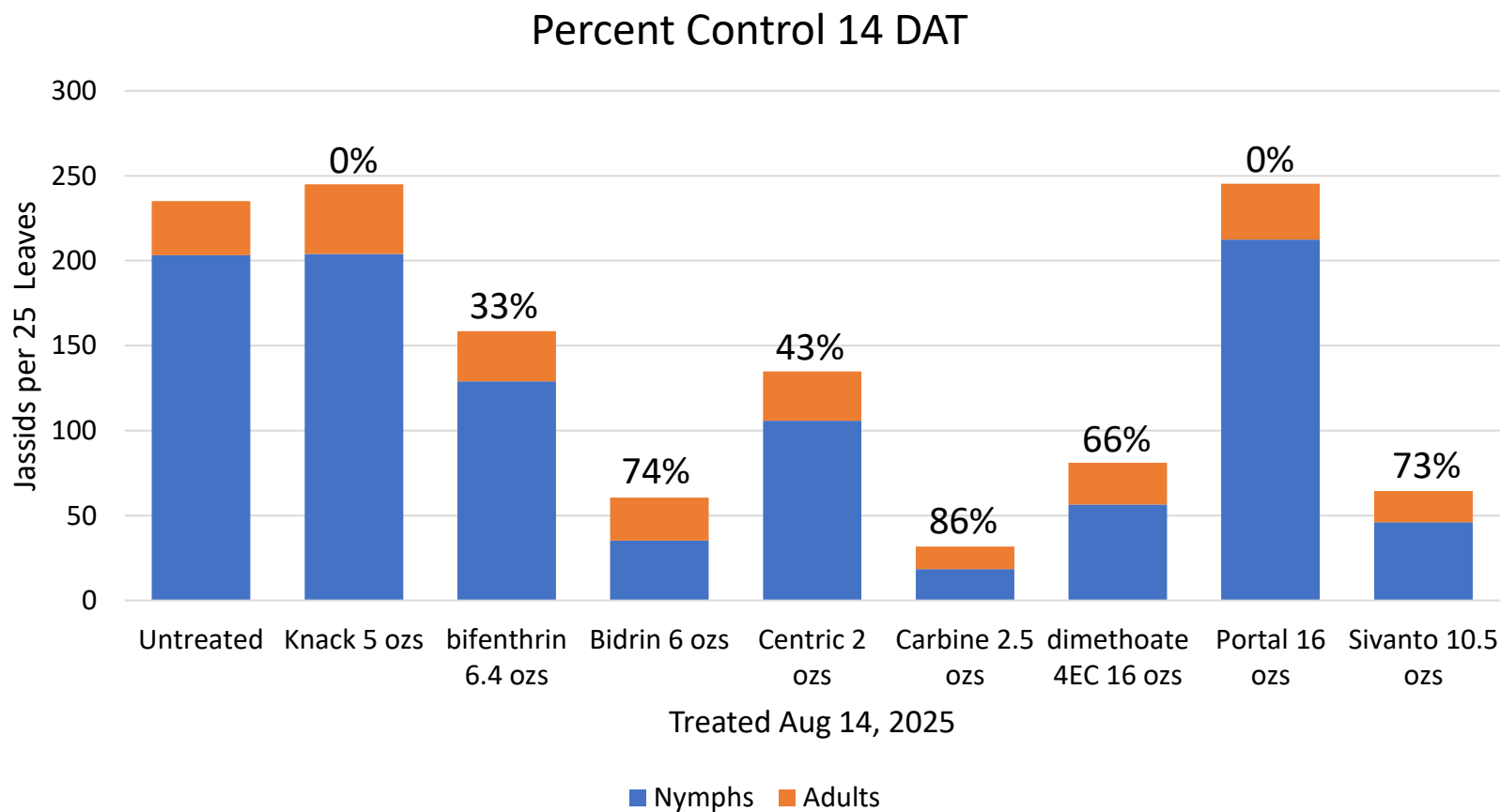
Cotton Jassid

Brooks County (7 DAT)



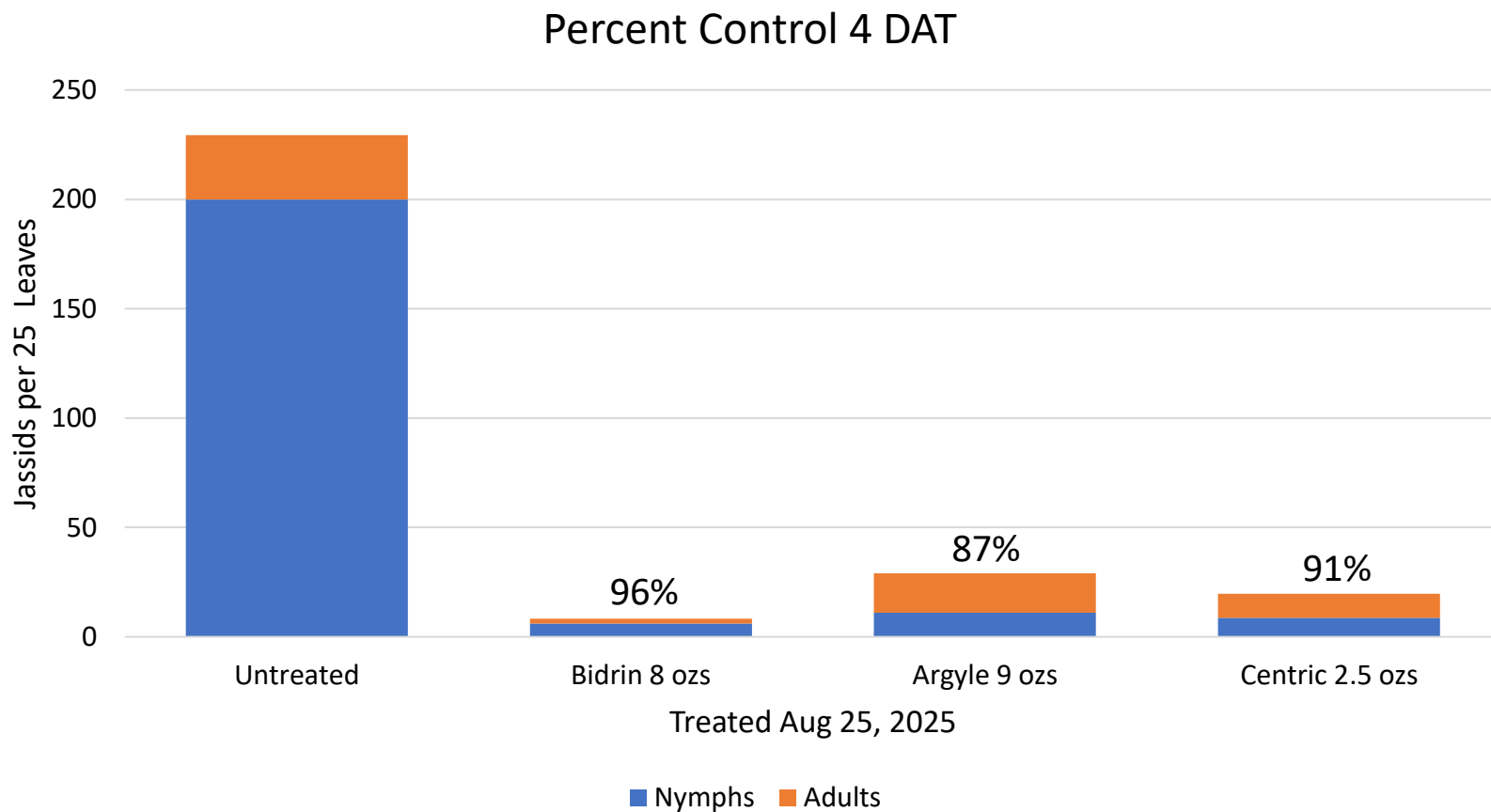
Cotton Jassid

Brooks County (14 DAT)



Cotton Jassid

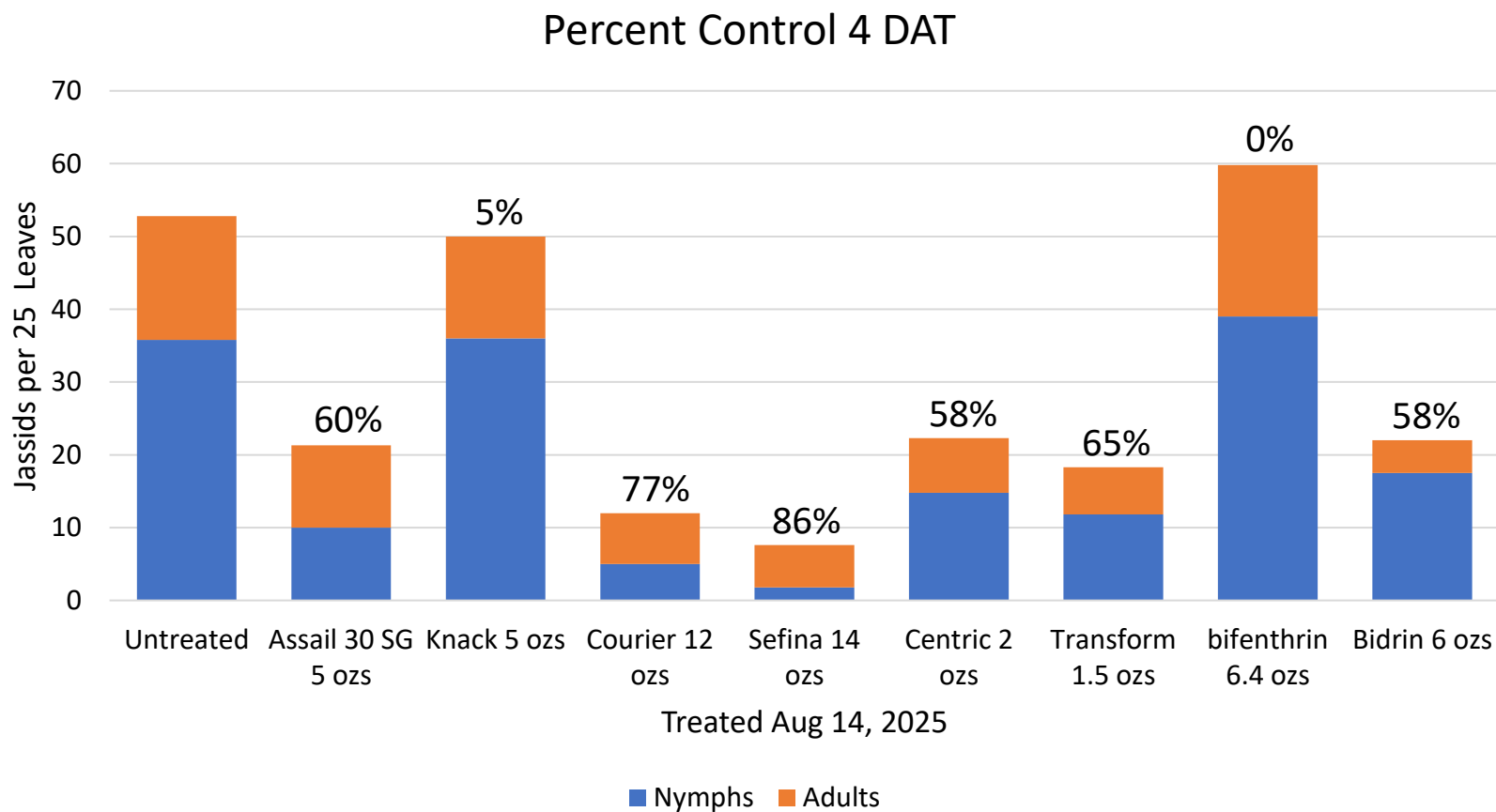
Brooks County Strip Trial (4 DAT)



Plots 6 rows wide and >300 feet in length.

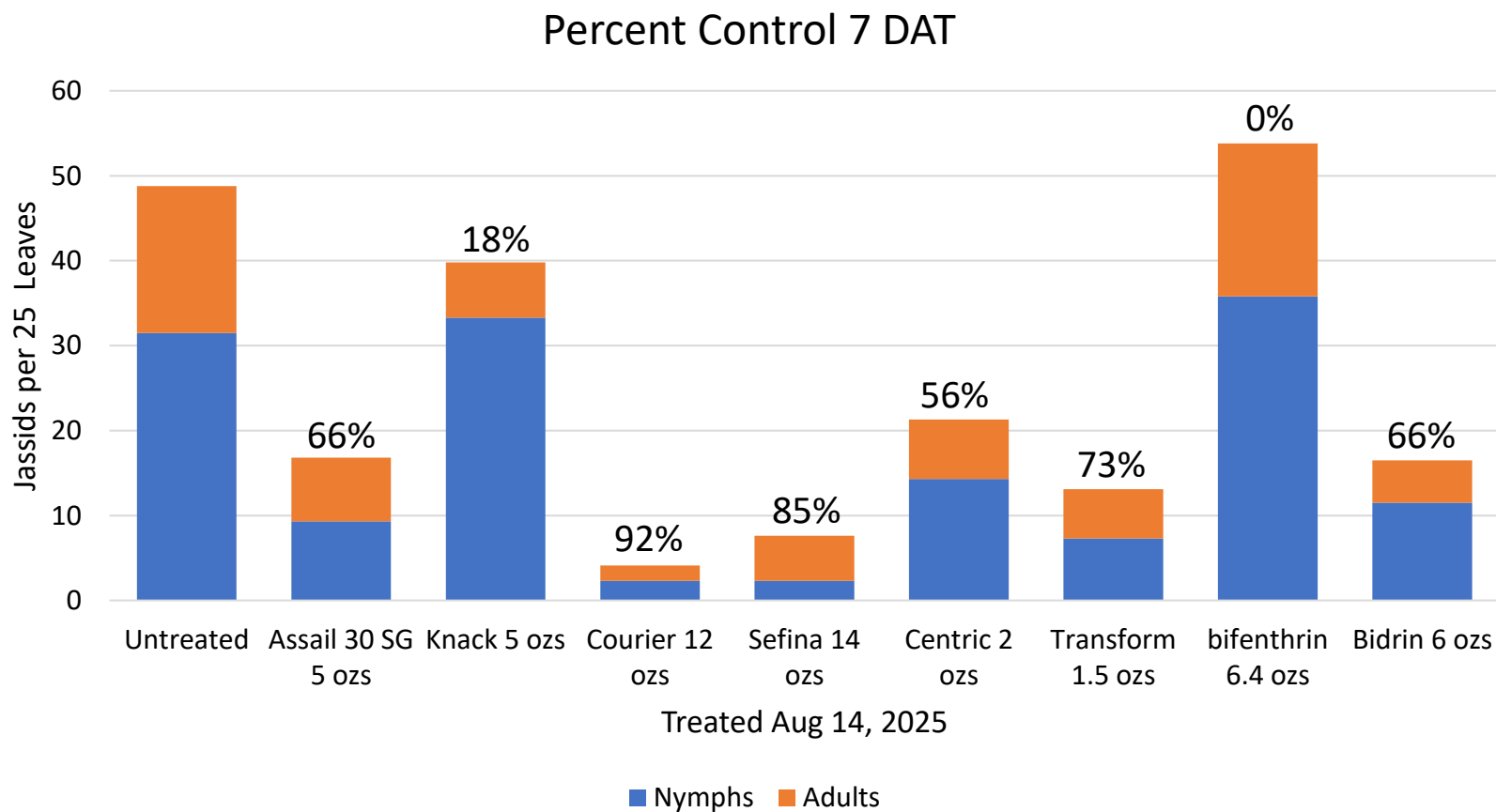
Cotton Jassid

Colquitt County (4 DAT)



Cotton Jassid

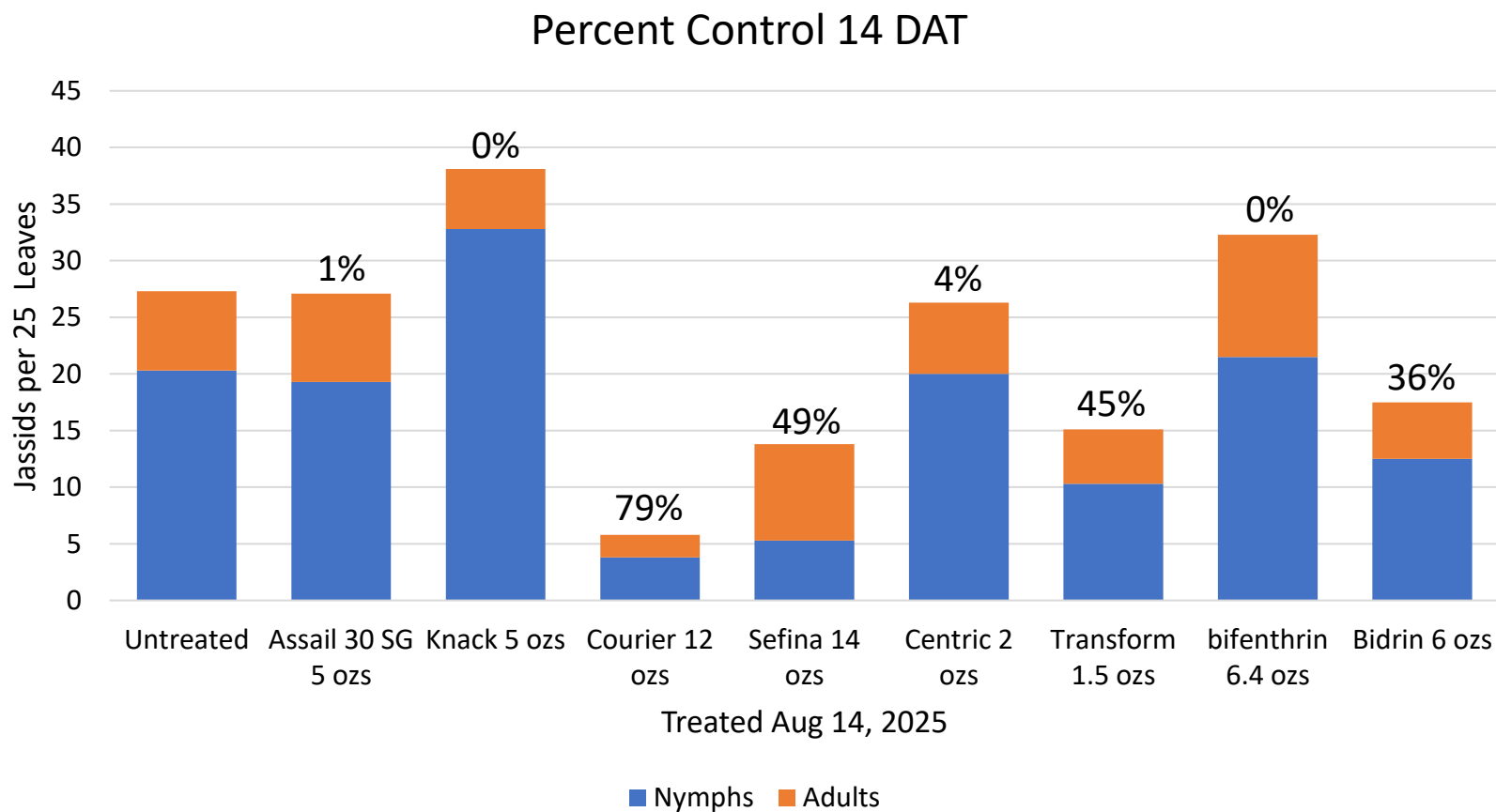
Colquitt County (7 DAT)



Cotton Jassid

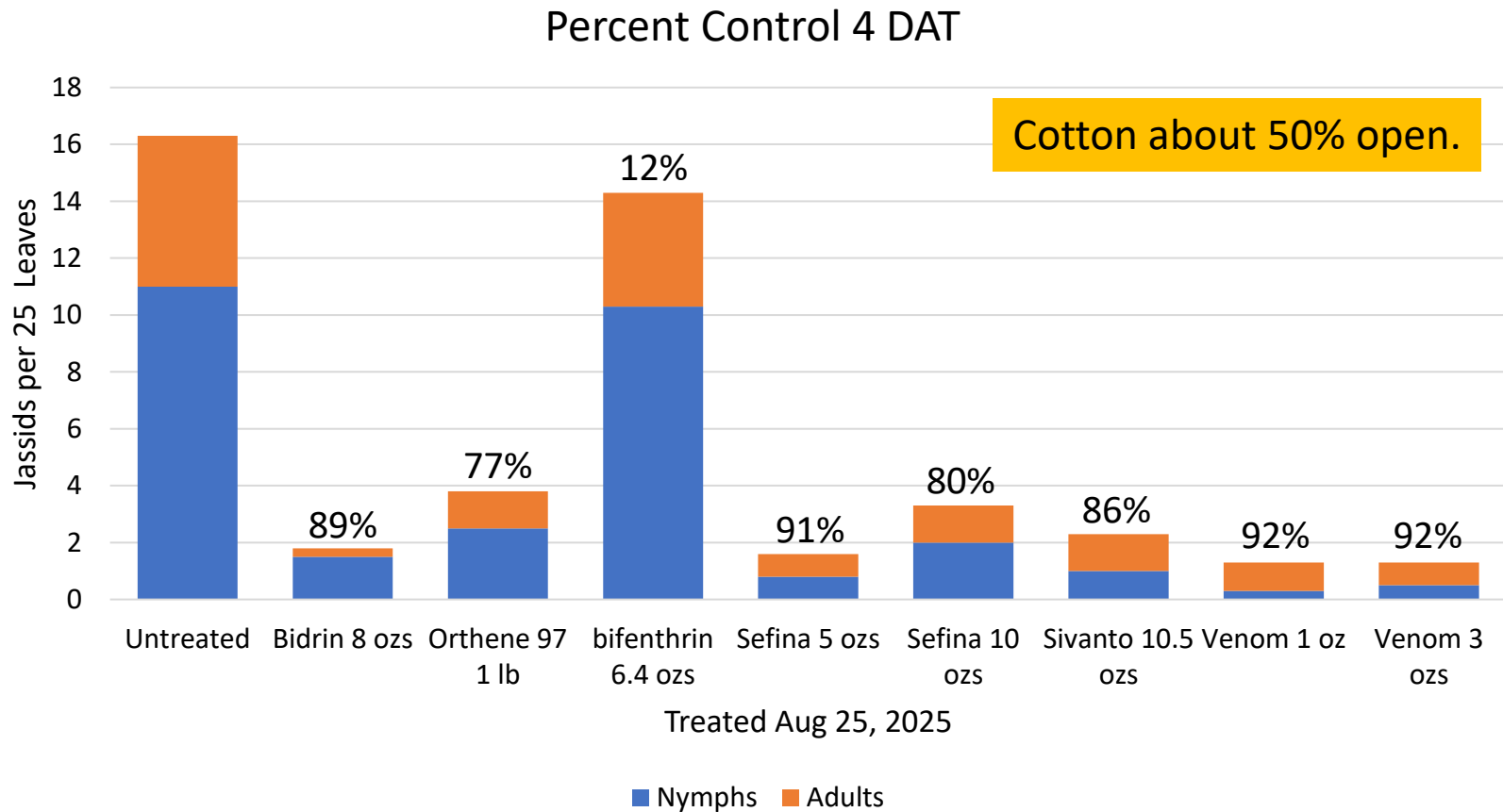
Colquitt County (14 DAT)

Cotton ready to defoliate.
Infestations spotty in green areas.



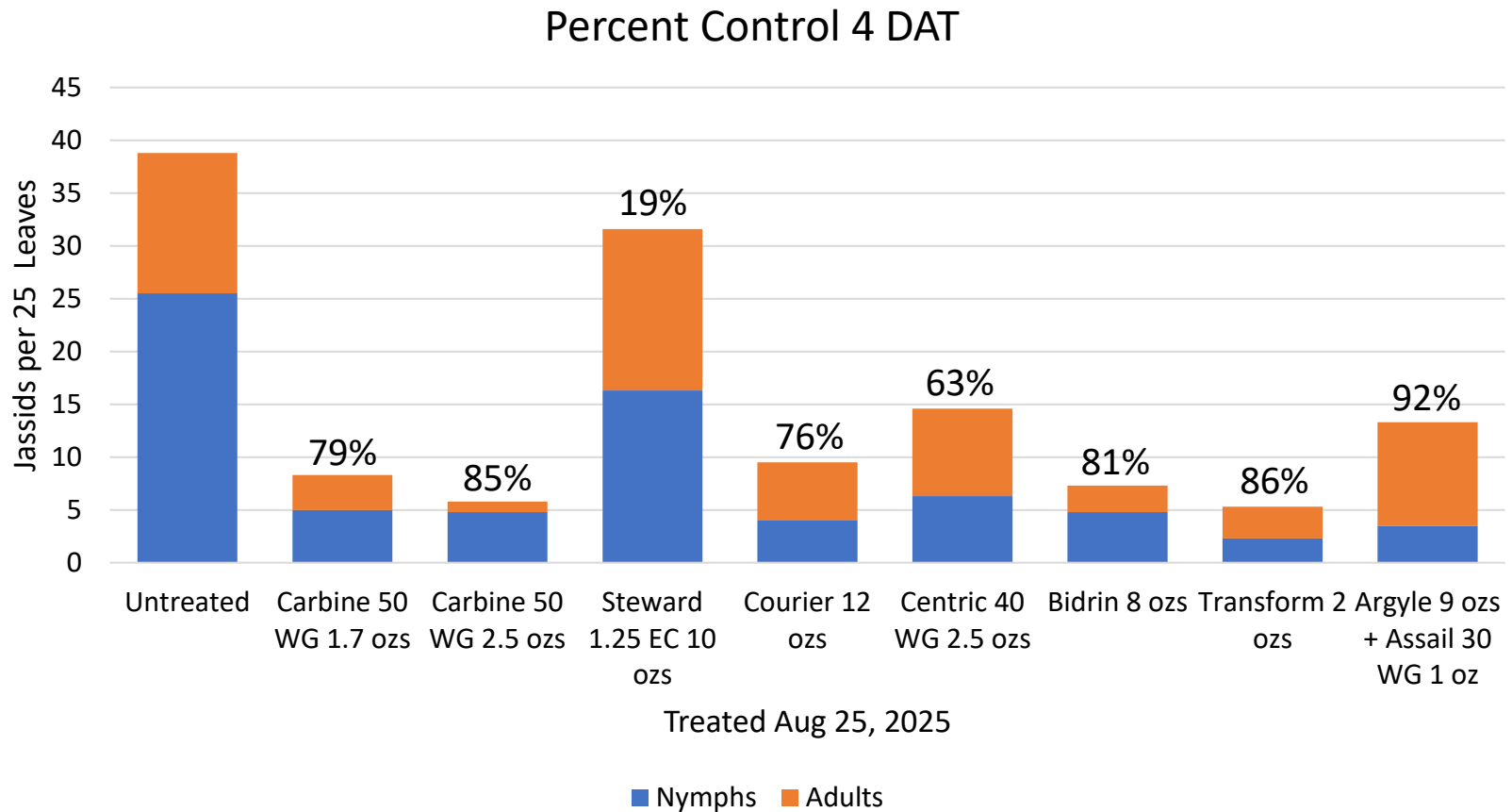
Cotton Jassid

Attapulugus Research and Education Center Dryland (4 DAT)



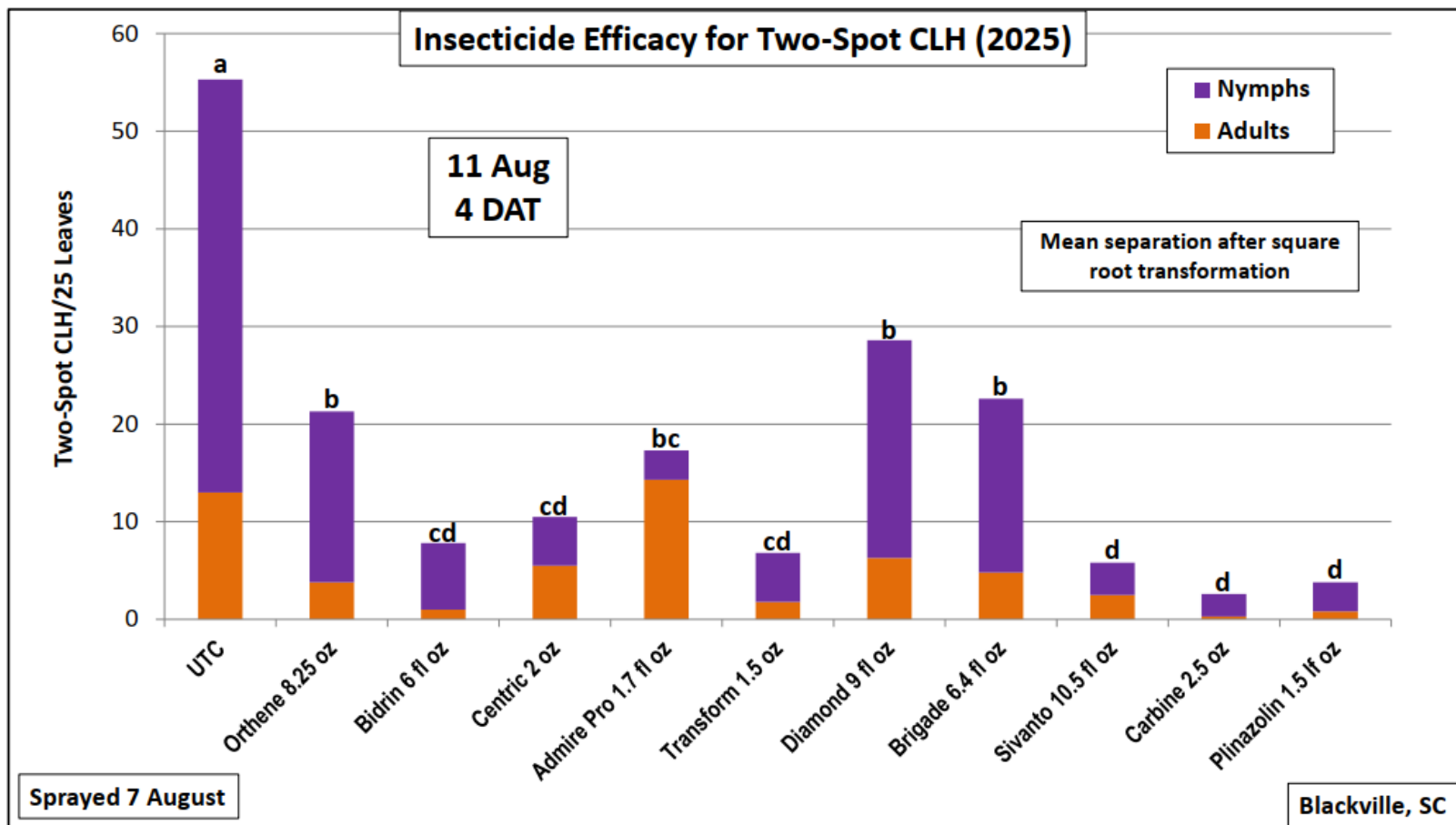
Cotton Jassid

Attapulugus Research and Education Center Irrigated (4 DAT)



Cotton Jassid

Blackville SC (Dr. Jeremy Greene, Clemson)



Cotton Jassid

Blackville SC (Dr. Jeremy Greene, Clemson)

