

# HOW TO SELECT A RIPE WATERMELON

## IN THE FIELD: WHAT TO LOOK FOR



### CHECK THE TENDRIL

A brown, dried tendril near the melon indicates it is mature.



### INSPECT THE GROUND SPOT

A ripe melon will have a bright yellow spot, pale or white means its less mature.



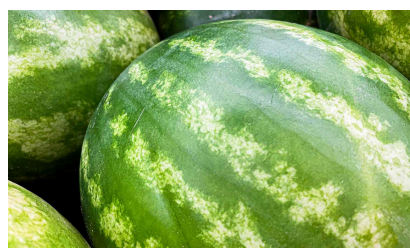
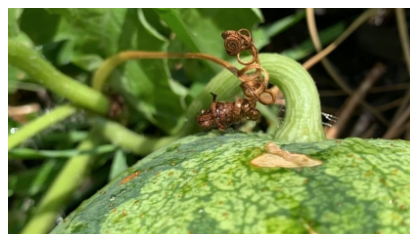
### THUMP IT

A hollow sound indicates ripeness, while an immature melon will have a higher-pitched sound.



### EXAMINE THE RIND APPEARANCE

Striped melons should have green bands that break up at the blossom end.



## AT THE GROCERY STORE



### GROUND SPOT

A bright yellow patch is good



### WEIGHT TEST

Pick up the watermelon-it should feel heavy for its size



### SOUND TEST

Thump the watermelon and listen for a dull, hollow sound