

HOOVES TO HORNS

ANATOMY AND TERMINOLOGY LESSON

Learning Target: Identify individual animals and parts of beef cattle using the correct terminology.

Engagement Strategy:

Show students pictures of a beef bull, a cow, and a calf. Ask the class to describe what is different about each of the animals shown and what is the same. Talk about why it is important to call animals and parts of animals by their correct terms. Label each animal with the correct term: bull, cow, and calf.

- **Bull:** Adult male cattle are called "bulls". Typically they are heavier than the females and can be more aggressive. Bulls have lots of muscle particularly with a very muscular neck that looks like a hump just in front of their shoulders. Bulls can have horns but some breeds naturally do not have horns. These are called "polled".
- **Cow:** Adult female cattle are called "cows". They are about the same height as bulls but not as muscular. Cows have an udder that provides milk to feed their babies. Cows can have horns if that is a characteristic of their breed. Horns do not indicate male or female.
- **Calf:** Young cattle (both male and female) are called "calves". A single young animal is a "calf". Male and female calves look very similar and it is hard to tell them apart from a distance.

Learning Activity:

Give students the "Hooves to Horns" activity page. Students will use the word bank to label the diagram of a beef cow with the given terms for basic parts (hoof, udder, poll, etc.).

You can have students work on their own to label the cow or complete the page as a class. Use the Teacher's Guide page to go over the correct terms for each part.

Culminating Activity:

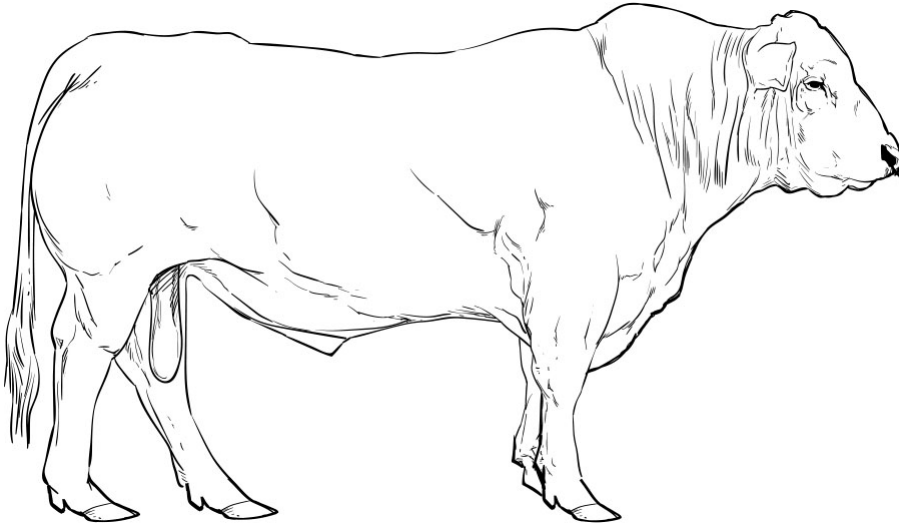
Give students the "This or That" activity page. Students will use what they learned in the class discussion to choose one of the two options on each question. Have students complete this on their own. Remind them that they may not know every answer but to make their best guess.

When everyone is finished, write the choices on the board one at a time. Have the class vote on which they think is correct. You can even tally the votes under each choice. Discuss each choice and talk about the characteristics of and terminology for beef cattle.

- **Hooves:** The feet on cattle are called hooves. Each hoof has two toes.
- **Horns:** Some cattle (not all) have horns and both male and female cattle can have horns. Their horns do not fall off like antlers do.
- **Calves:** The young or babies of cattle are called calves or a single calf.
- **Herbivores:** Cattle are herbivores because they only eat plants like grass and grain. Cattle don't even have top teeth in the front. Instead they have a hard pad of skin and grab their food with their tongue.
- **Beef:** Meat from cattle is called "beef". Beef can be made into burgers but all meat from cattle, even steak, is called beef.
- **Polled:** The term polled is for cattle that naturally don't have horns. Angus cattle, for example, do not grow horns.
- **Hair:** While hair and fur are basically the same thing, we call it hair on cattle and it helps to keep them warm.

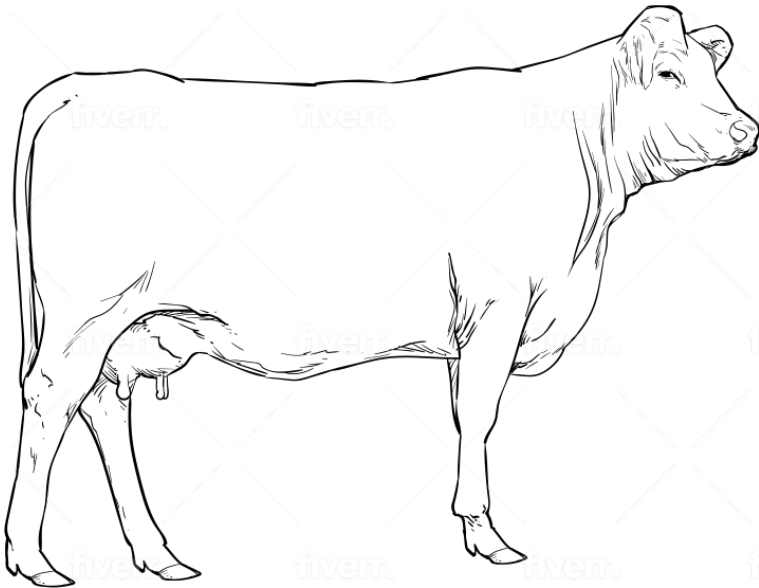
HOOVES TO HORNS

TERMINOLOGY



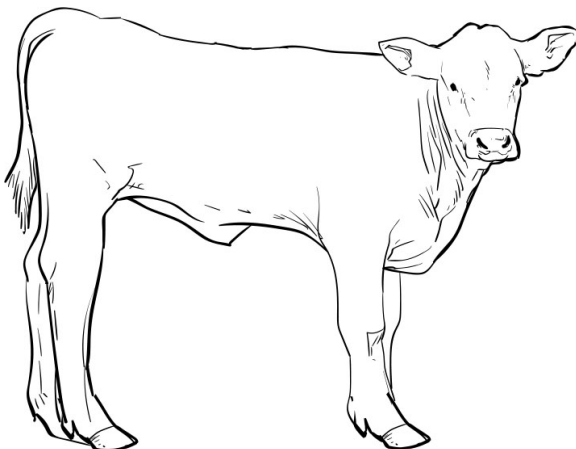
BULL

Adult male cattle are called "bulls". Typically they are heavier than the females and can be more aggressive. Bulls have lots of muscle particularly with a very muscular neck that looks like a hump just in front of their shoulders. Bulls can have horns but some breeds naturally do not have horns. These are called "polled".



COW

Adult female cattle are called "cows". They are about the same height as bulls but not as muscular. Cows have an udder that provides milk to feed their babies. Cows can have horns if that is a characteristic of their breed. Horns do not indicate male or female.

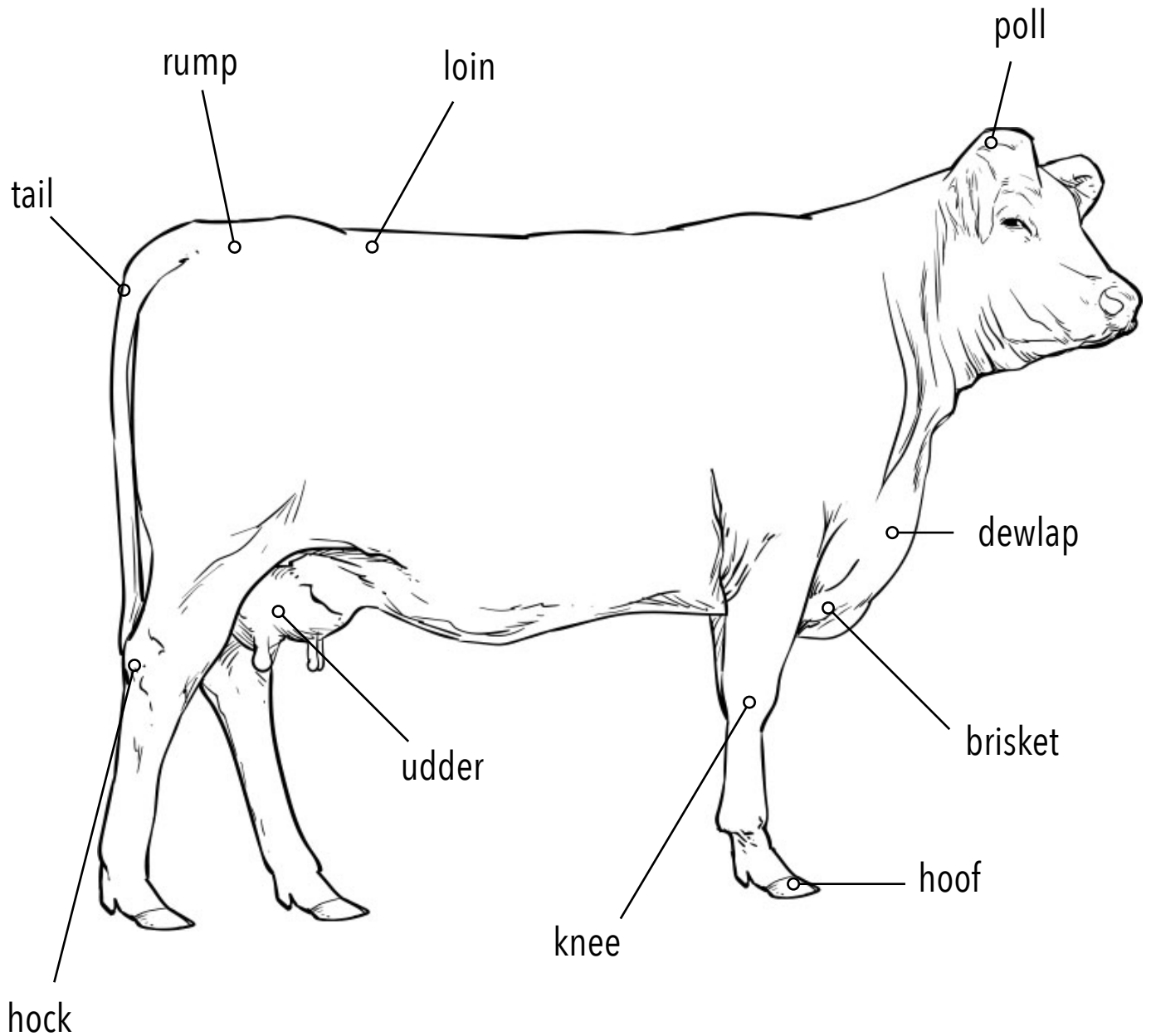


CALF

Young cattle (both male and female) are called "calves". A single young animal is a "calf". Male and female calves look very similar and it is hard to tell them apart from a distance.

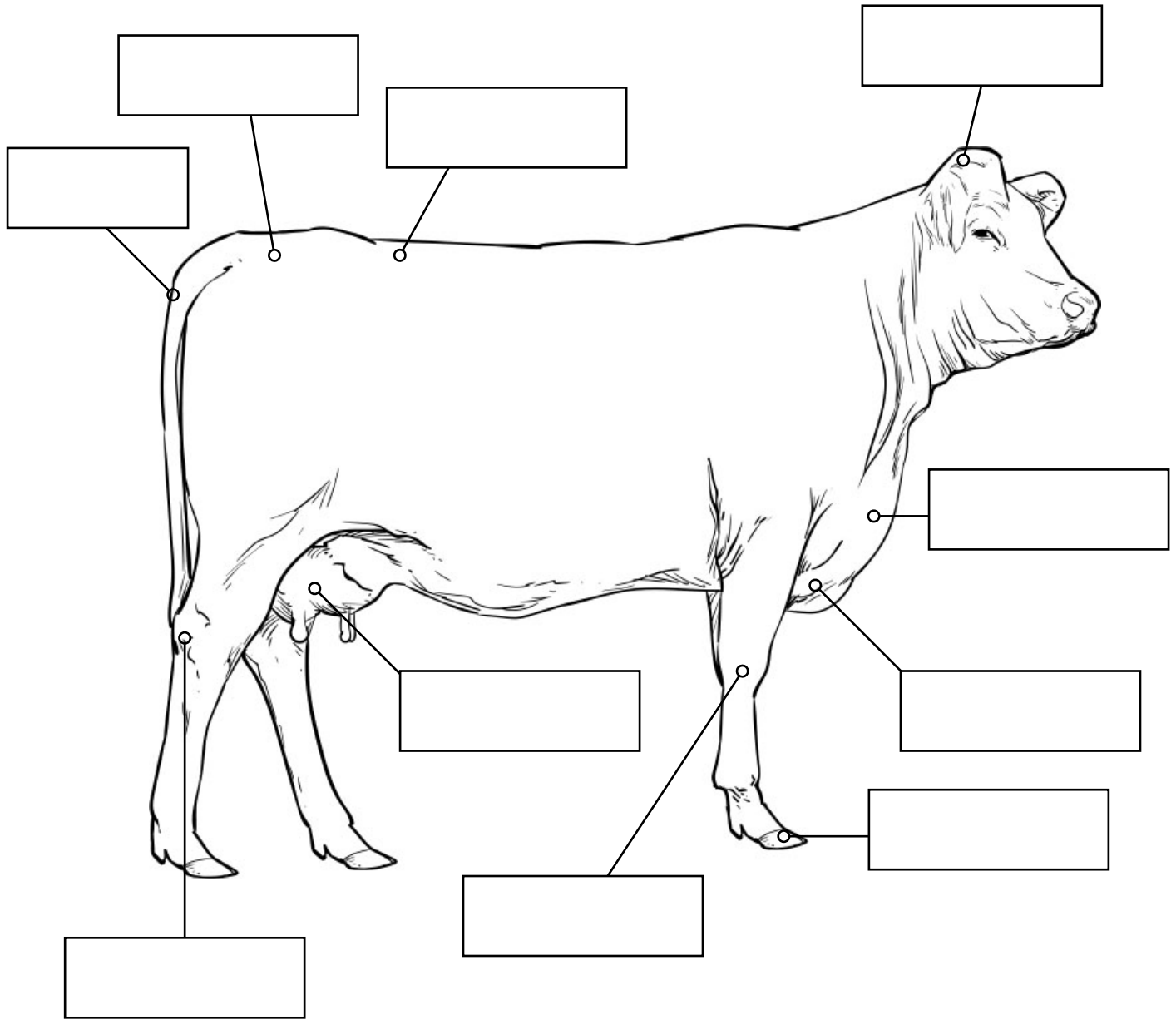
HOOVES TO HORNS

ANATOMY



HOOFES TO HORNS

PARTS OF BEEF CATTLE



WORD BANK

hoof

udder

loin

brisket

knee

poll

dewlap

rump

hock

tail

THIS OR THAT

TERMS FOR BEEF CATTLE

(circle one)

Do cattle have... **FEET** or **HOOVES**

Do cattle have... **HORNS** or **ANTLERS**

Are young cattle called... **CALVES** or **KIDS**

Are cattle... **HERBIVORES** or **CARNIVORES**

Is meat from cattle called... **BEEF** or **BURGER**

"Polled" cattle don't have... **FAT** or **HORNS**

Do cattle have... **FUR** or **HAIR**