

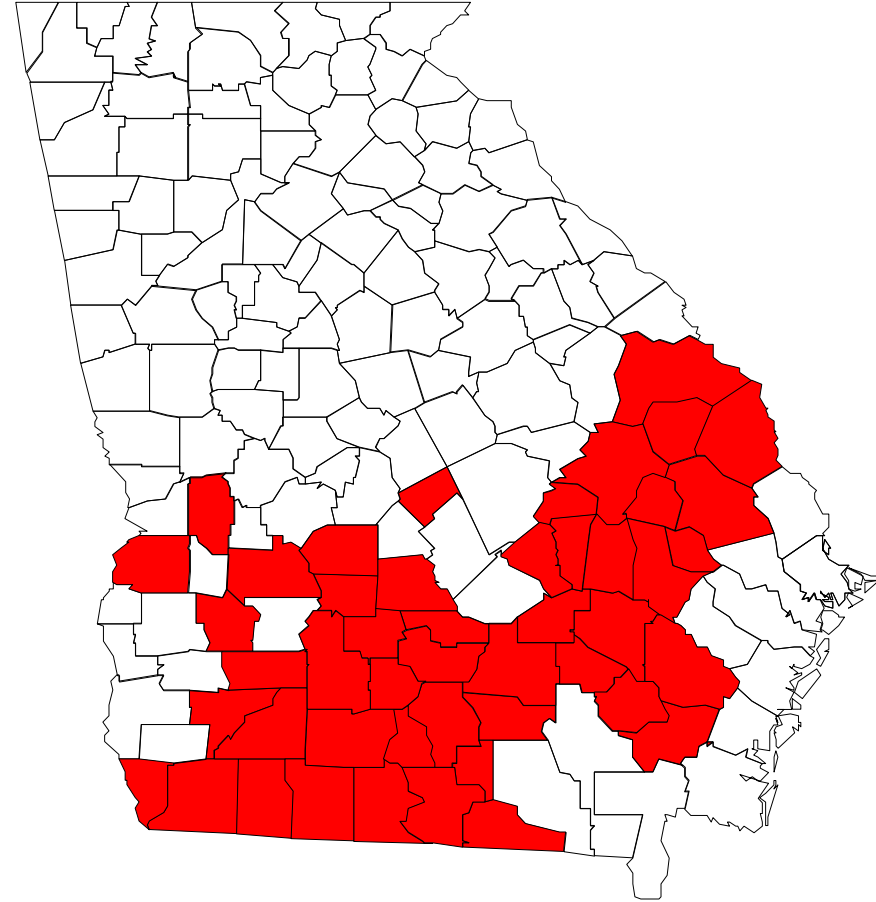
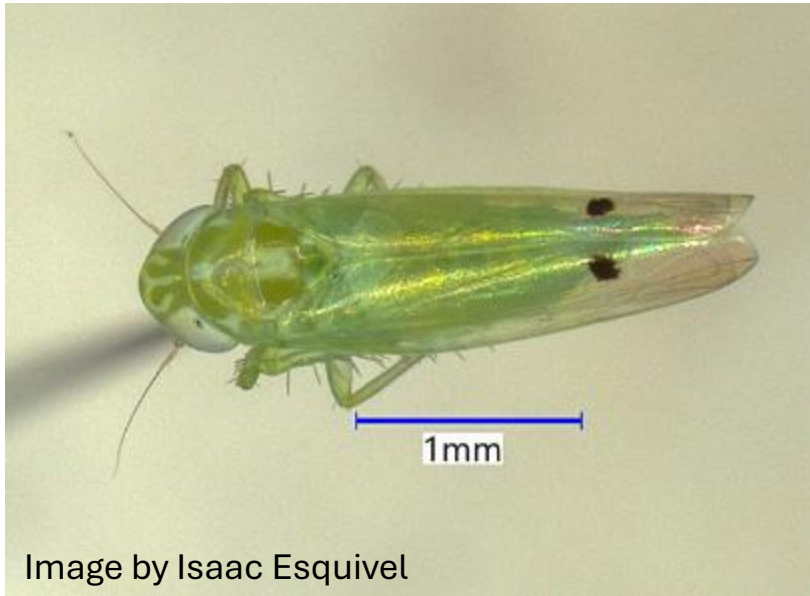
Cotton Jassid Update

Phillip Roberts

August 18, 2025

Cotton Jassid County Detections

As of August 18, 2025



Cotton Jassid Plant Damage



Early symptoms of “hopperburn” left.
Severe symptoms middle and right.



Jassid infestations and plant injury symptoms are higher on field margins. Symptoms can show up quickly. We do not want whole fields to look like edges (we are seeing whole fields with symptoms in several counties).

DO NOT underestimate this pest!

NEW UPDATED
THRESHOLD

Scouting Cotton Jassid

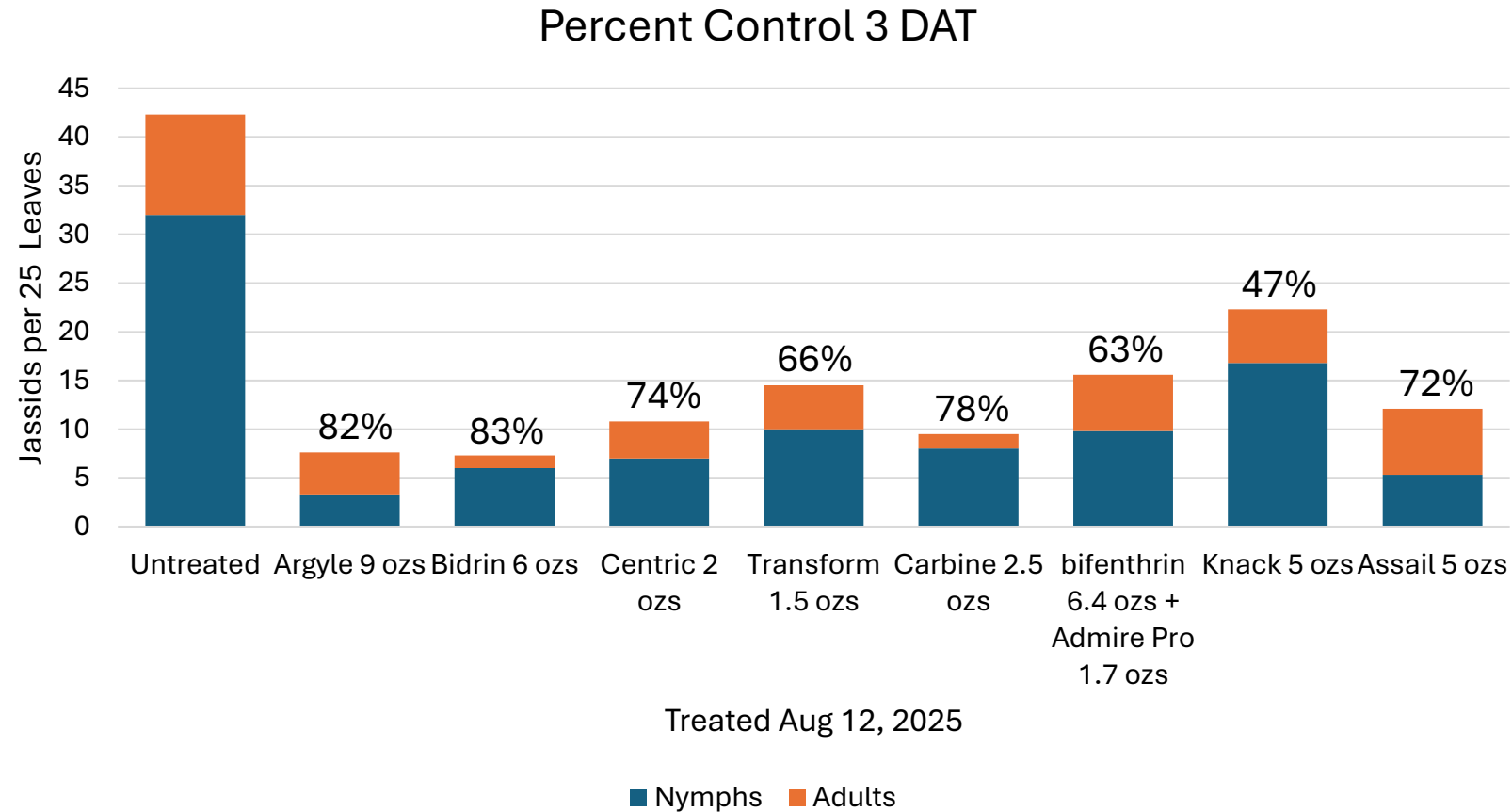
- Count jassid nymphs on the 3rd, 4th, or 5th mainstem leaf below the terminal (they are most commonly found on the 4th).
- **NEW Preliminary Threshold:**
 - 2 nymphs per leaf and symptoms present.
 - Or early symptoms (slight hopperburn) commonly observed in inner portion of field and jassids present.
 - Zoom in pic on right and you will see cast skins (exoskeleton where nymphs molted).



UNIVERSITY OF GEORGIA
EXTENSION

Cotton Jassid

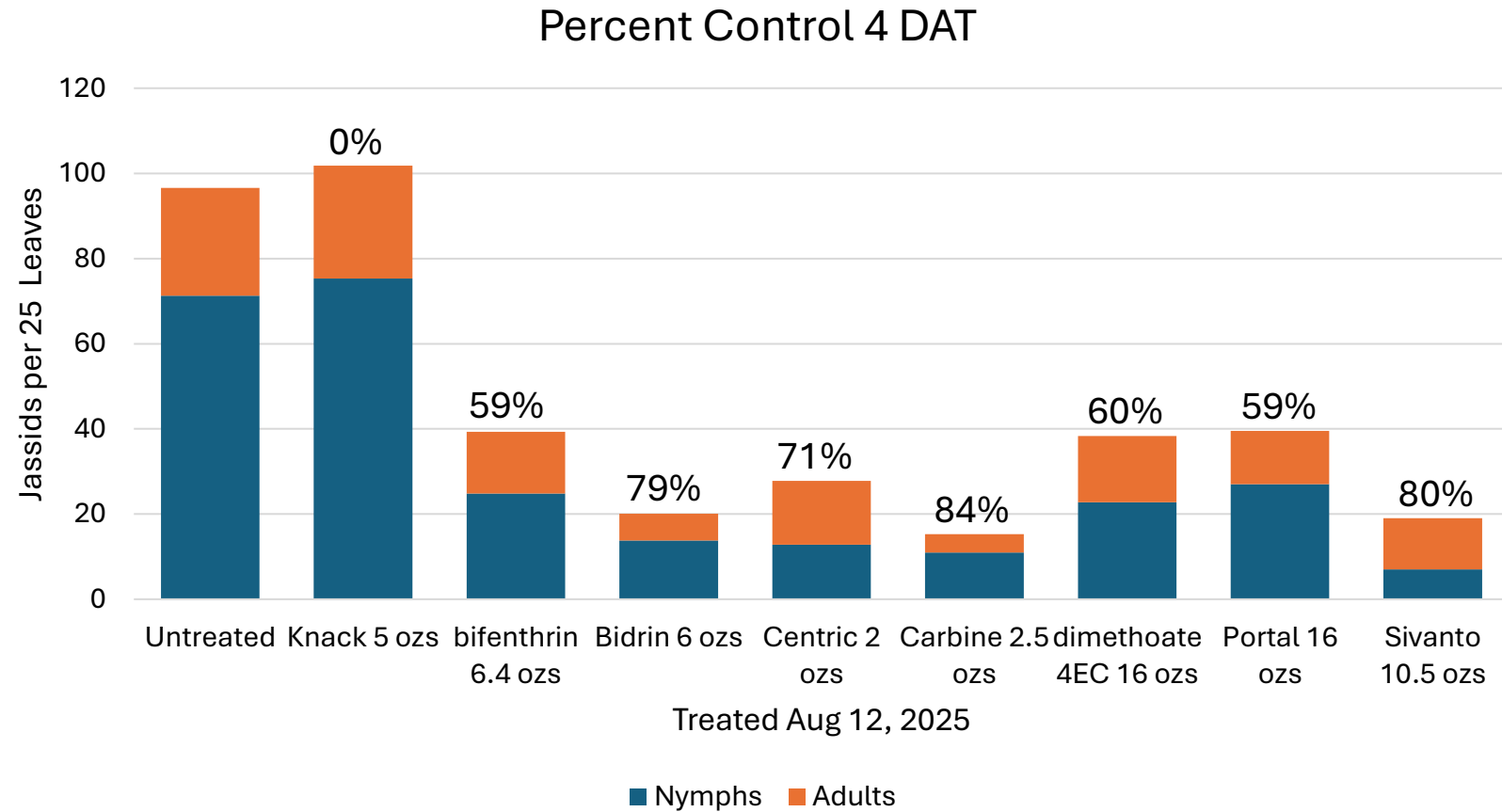
Appling County (3 DAT)



Treated August 12, 2025

Cotton Jassid

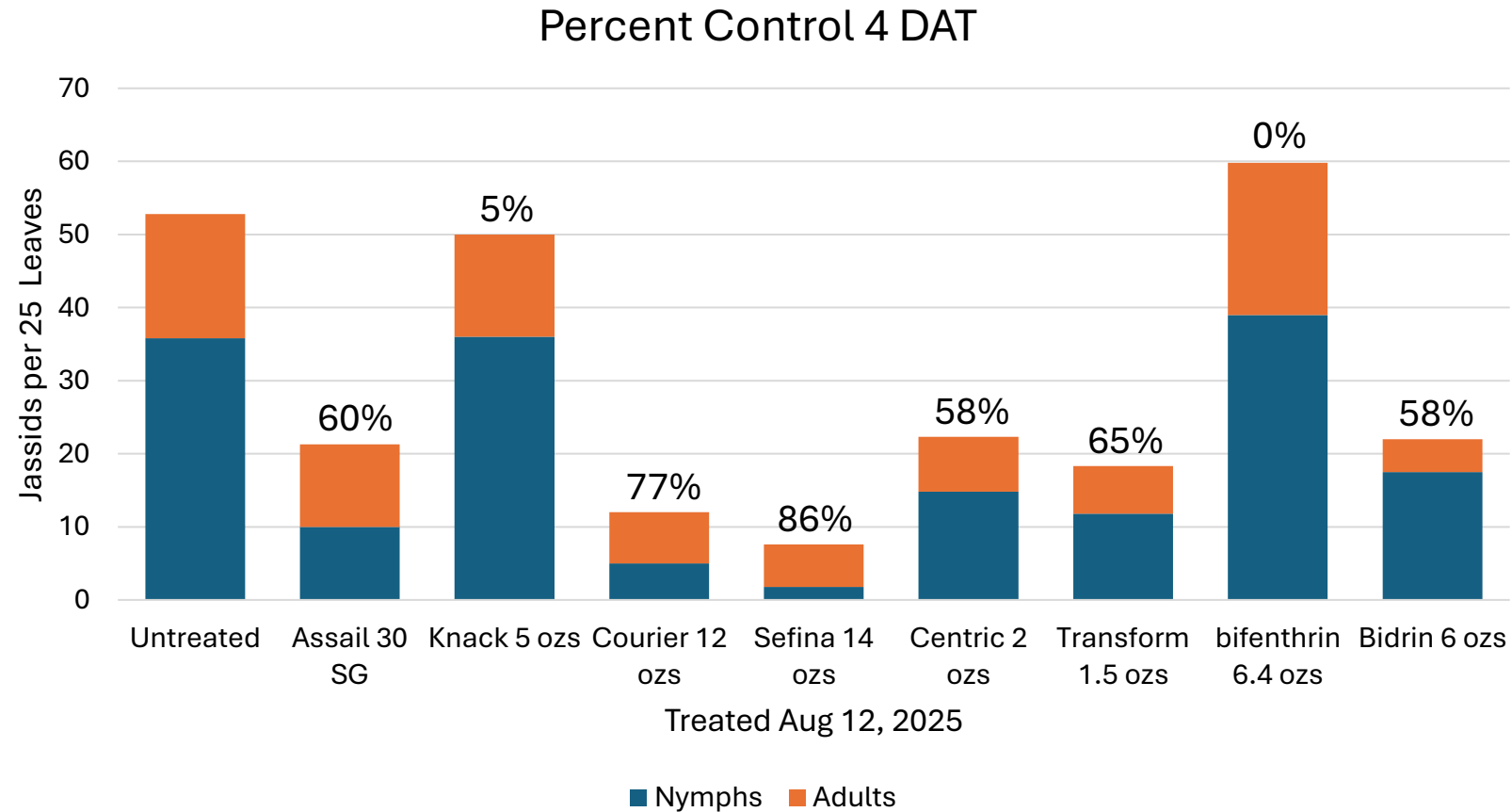
Brooks County (4 DAT)



Treated August 14, 2025

Cotton Jassid

Colquitt County (4 DAT)



Treated August 14, 2025

Insecticide Selection

Low Whitefly Risk Areas

- Bidrin has been used in commercial fields with good results.
 - Bidrin percent control averaged 73 percent in the three trials (control seems better than this in commercial fields).
 - I have confidence in Bidrin but there are other options.
 - Pyrethroids (bifenthrin) will not provide acceptable control of jassids.

High Whitefly Risk Areas

- If you do not want to apply Bidrin then what?
 - Centric percent control was 68 percent in the three trials (have received some positive comments from field applications. Transform looks similar to Centric in two trials which included each. Will need to tank mix with pyrethroid to control stink bugs.
 - Assail and Argyle (premix of bifenthrin and Assail) is an option when whiteflies are present.
 - Again there are other options.

Our data set is limited, but at least we have this.

Cotton Jassid

- This is an EVOLVING situation.
- We will provide updates as new information becomes available (we will try to be concise).
- I was asked how bad jassids can be in terms of yield? From what I have read from India can vary from 100 lbs/a up to 50 percent yield loss. What happens in Georgia is TBD.
- I was also asked how long do we have to worry about jassids? Again we have a lot to learn and that is TBD. But you do need green leaves to fill bolls.